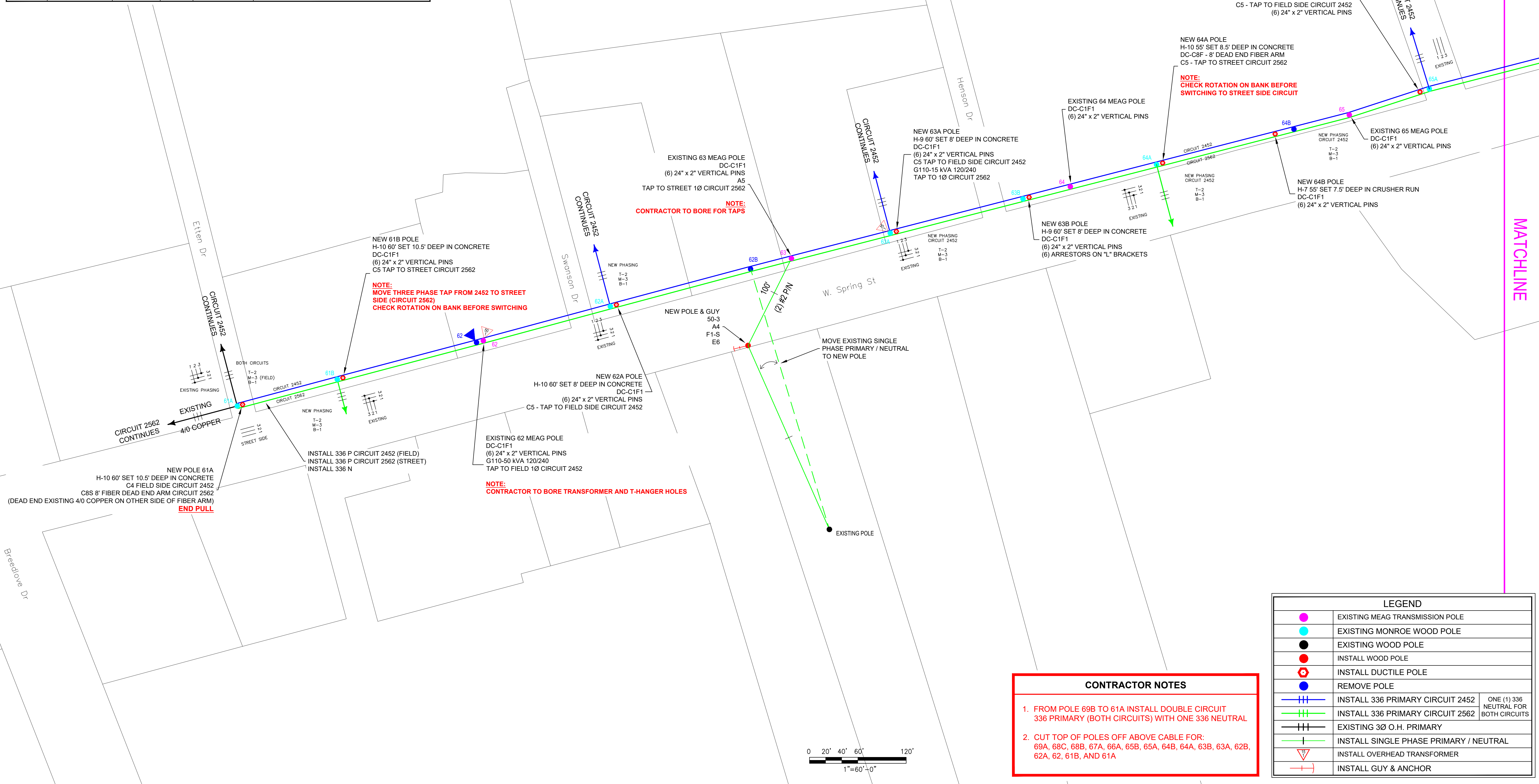


TABLE 1

Skip Pole	115 kV Conductor Midspan Elevation (Lowpoint, ft)	Suggested Skip Pole Length (ft)	Embed (ft)	Clearance [115 kV Conductor to Pole] (ft)	Notes:
61A / 61B	H-10 / H-10 57.2	60	10.5	7.7	Overembed 2.5'
62A	H-10 58.5	60	8	6.5	
63A	H-9 59.7	60	8	7.7	
63B	H-9 61.2	60	8	9.2	
64A	H-10 56.9	55	8.5	10.4	Overembed 1'. Not necessary for clearance
64B	H-7 59.6	55	7.5	12.1	60' will work
65A	H-10 58.6	60	10	8.6	Overembed 2' Assumed. Not necessary for clearance
65B	H-9 53.6	55	9.5	8.1	Overembed 2'
66A	H-7 59.9	60	9.5	9.4	Overembed 1.5' Assumed. Not necessary for clearance
67A	H-7 55.7	55	7.5	8.2	
68A	H-7	55	7.5	-	
69A	H-9 53.9	55	7.5	6.4	
69B	H-10	50	7	-	
67 1/2	H-10	55	7.5	-	

MATCHLINE

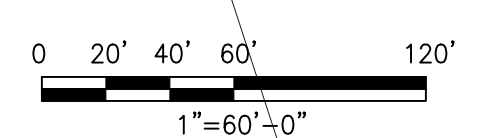
CITY OF MONROE
O.H. RECONDUCTOR PROJECT
SPRING STREET
PRELIMINARY DESIGN
ELECTRICAL DISTRIBUTION SERVICES



CONTRACTOR NOTES

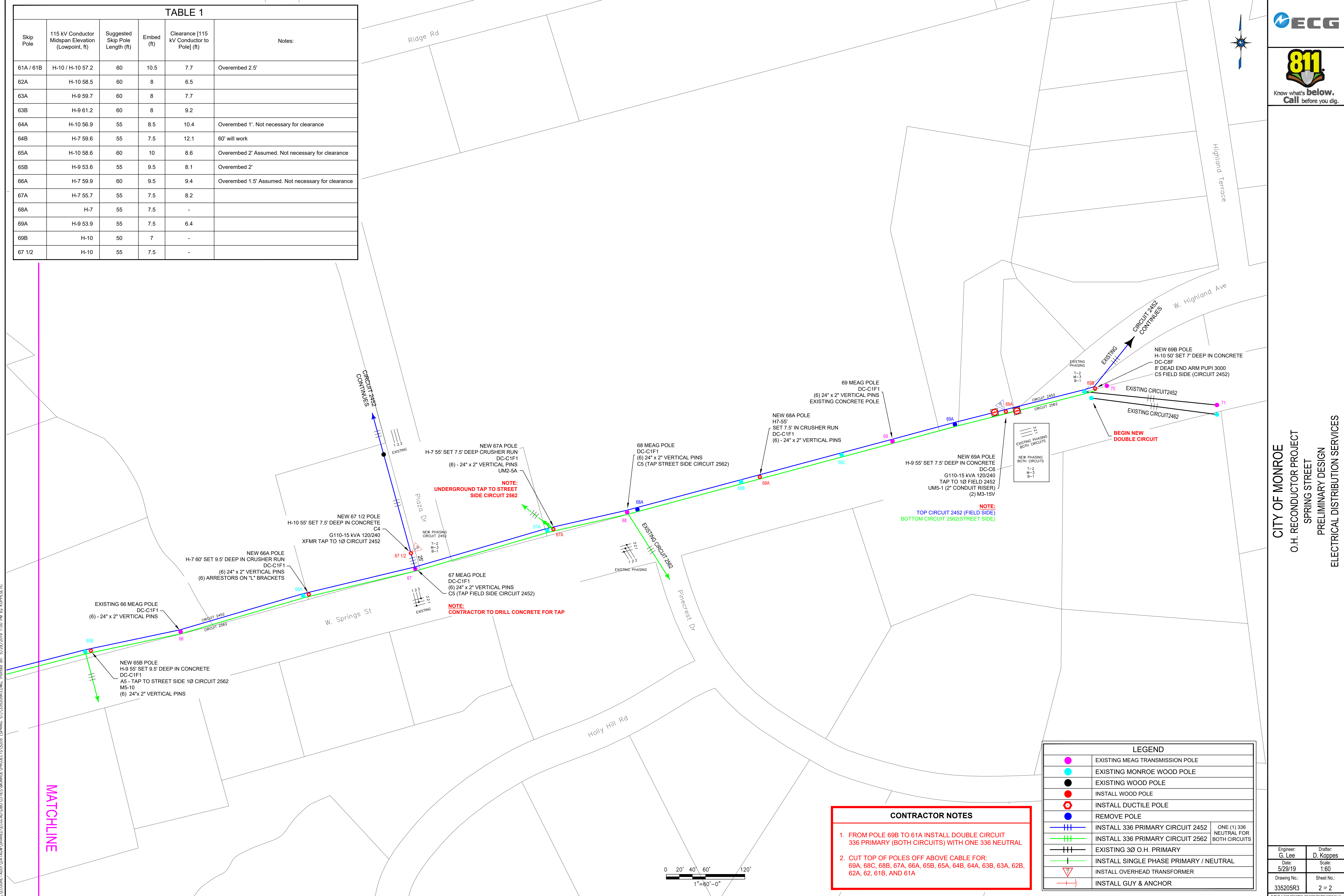
- FROM POLE 69B TO 61A INSTALL DOUBLE CIRCUIT 336 PRIMARY (BOTH CIRCUITS) WITH ONE 336 NEUTRAL
- CUT TOP OF POLES OFF ABOVE CABLE FOR:
69A, 68C, 68B, 67A, 66A, 65B, 65A, 64B, 64A, 63B, 63A, 62B, 62A, 62, 61B, AND 61A

LEGEND	
	EXISTING MEAG TRANSMISSION POLE
	EXISTING MONROE WOOD POLE
	EXISTING WOOD POLE
	INSTALL WOOD POLE
	INSTALL DUCTILE POLE
	REMOVE POLE
	INSTALL 336 PRIMARY CIRCUIT 2452
	INSTALL 336 PRIMARY CIRCUIT 2562
	EXISTING 3Ø O.H. PRIMARY
	INSTALL SINGLE PHASE PRIMARY / NEUTRAL
	INSTALL OVERHEAD TRANSFORMER
	INSTALL GUY & ANCHOR



\\EGC08-4001\DATA\KAW\SHARED\EGC\CAD\PROJECTS\MONROE\PROJECTS\5205 (SPRING ST)\336OHR.DWG, Plotter on: 5/29/2019 1:00 PM by KOPPESTIC

TABLE 1					
Skip Pole	115 kV Conductor Midspan Elevation (Lowpoint, ft)	Suggested Skip Pole Length (ft)	Embed (ft)	Clearance [115 kV Conductor to Pole] (ft)	Notes:
61A / 61B	H-10 / H-10 57.2	60	10.5	7.7	Overembded 2.5'
62A	H-10 58.5	60	8	6.5	
63A	H-9 59.7	60	8	7.7	
63B	H-9 61.2	60	8	9.2	
64A	H-10 56.9	55	8.5	10.4	Overembded 1'. Not necessary for clearance
64B	H-7 59.6	55	7.5	12.1	60' will work
65A	H-10 58.6	60	10	8.6	Overembded 2' Assumed. Not necessary for clearance
65B	H-9 53.6	55	9.5	8.1	Overembded 2'
66A	H-7 59.9	60	9.5	9.4	Overembded 1.5' Assumed. Not necessary for clearance
67A	H-7 55.7	55	7.5	8.2	
68A	H-7	55	7.5	-	
69A	H-9 53.9	55	7.5	6.4	
69B	H-10	50	7	-	
67 1/2	H-10	55	7.5	-	



CITY OF MONROE
 O.H. RECONDUCTOR PROJECT
 SPRING STREET
 PRELIMINARY DESIGN
 ELECTRICAL DISTRIBUTION SERVICES

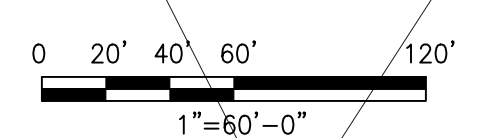
\\EGC08-4001\DATA\KAW\SHARED\EGC\CAD\PROJECTS\335205R3\PROJECTS\335205R3.DWG, Plotter on: 5/29/2019 1:00 PM by KOPPESETIC

MATCHLINE

CONTRACTOR NOTES

- FROM POLE 69B TO 61A INSTALL DOUBLE CIRCUIT 336 PRIMARY (BOTH CIRCUITS) WITH ONE 336 NEUTRAL
- CUT TOP OF POLES OFF ABOVE CABLE FOR: 69A, 68C, 68B, 67A, 66A, 65B, 65A, 64B, 64A, 63B, 63A, 62B, 62A, 62, 61B, AND 61A

LEGEND	
	EXISTING MEAG TRANSMISSION POLE
	EXISTING MONROE WOOD POLE
	EXISTING WOOD POLE
	INSTALL WOOD POLE
	INSTALL DUCTILE POLE
	REMOVE POLE
	INSTALL 336 PRIMARY CIRCUIT 2452
	INSTALL 336 PRIMARY CIRCUIT 2562
	EXISTING 3Ø O.H. PRIMARY
	INSTALL SINGLE PHASE PRIMARY / NEUTRAL
	INSTALL OVERHEAD TRANSFORMER
	INSTALL GUY & ANCHOR

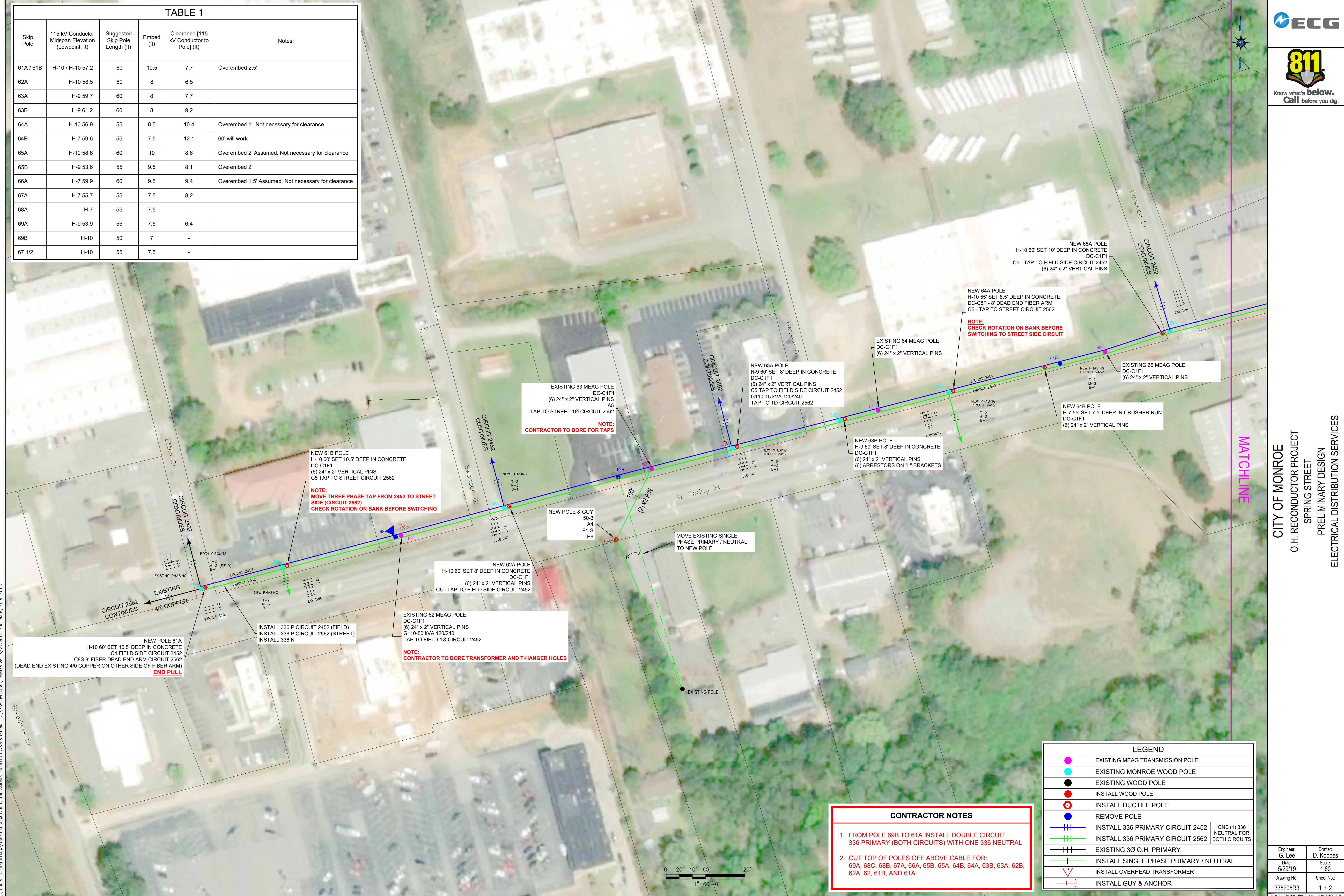


Engineer: G. Lee	Drafter: D. Koppes
Date: 5/29/19	Scale: 1:60
Drawing No.: 335205R3	Sheet No.: 2 of 2

THIS IS A CAD DRAWING. DO NOT REUSE MANUALLY.

TABLE 1

Skip Pole	115 kV Conductor Midspan Elevation (Lowpoint, ft)	Suggested Skip Pole Length (ft)	Embed (ft)	Clearance [115 kV Conductor to Pole] (ft)	Notes:
61A / 61B	H-10 / H-10 57.2	60	10.5	7.7	Overembded 2.5'
62A	H-10 58.5	60	8	6.5	
63A	H-9 59.7	60	8	7.7	
63B	H-9 61.2	60	8	9.2	
64A	H-10 56.9	55	8.5	10.4	Overembded 1'. Not necessary for clearance
64B	H-7 59.6	55	7.5	12.1	60' will work
65A	H-10 58.6	60	10	8.6	Overembded 2' Assumed. Not necessary for clearance
65B	H-9 53.6	55	9.5	8.1	Overembded 2'
66A	H-7 59.9	60	9.5	9.4	Overembded 1.5' Assumed. Not necessary for clearance
67A	H-7 55.7	55	7.5	8.2	
68A	H-7	55	7.5	-	
69A	H-9 53.9	55	7.5	6.4	
69B	H-10	50	7	-	
67 1/2	H-10	55	7.5	-	



MATCHLINE

CITY OF MONROE
 O.H. RECONDUCTOR PROJECT
 SPRING STREET
 PRELIMINARY DESIGN
 ELECTRICAL DISTRIBUTION SERVICES

\\VCG08-4001\DATA\KAW\SHERID\EGCAD\080\NOTES\MONROE_PROJECTS\33505 (SPRING ST)_335205R3.DWG, Plotter on: 5/29/2019 1:00 PM by KOPPESTIC

CONTRACTOR NOTES

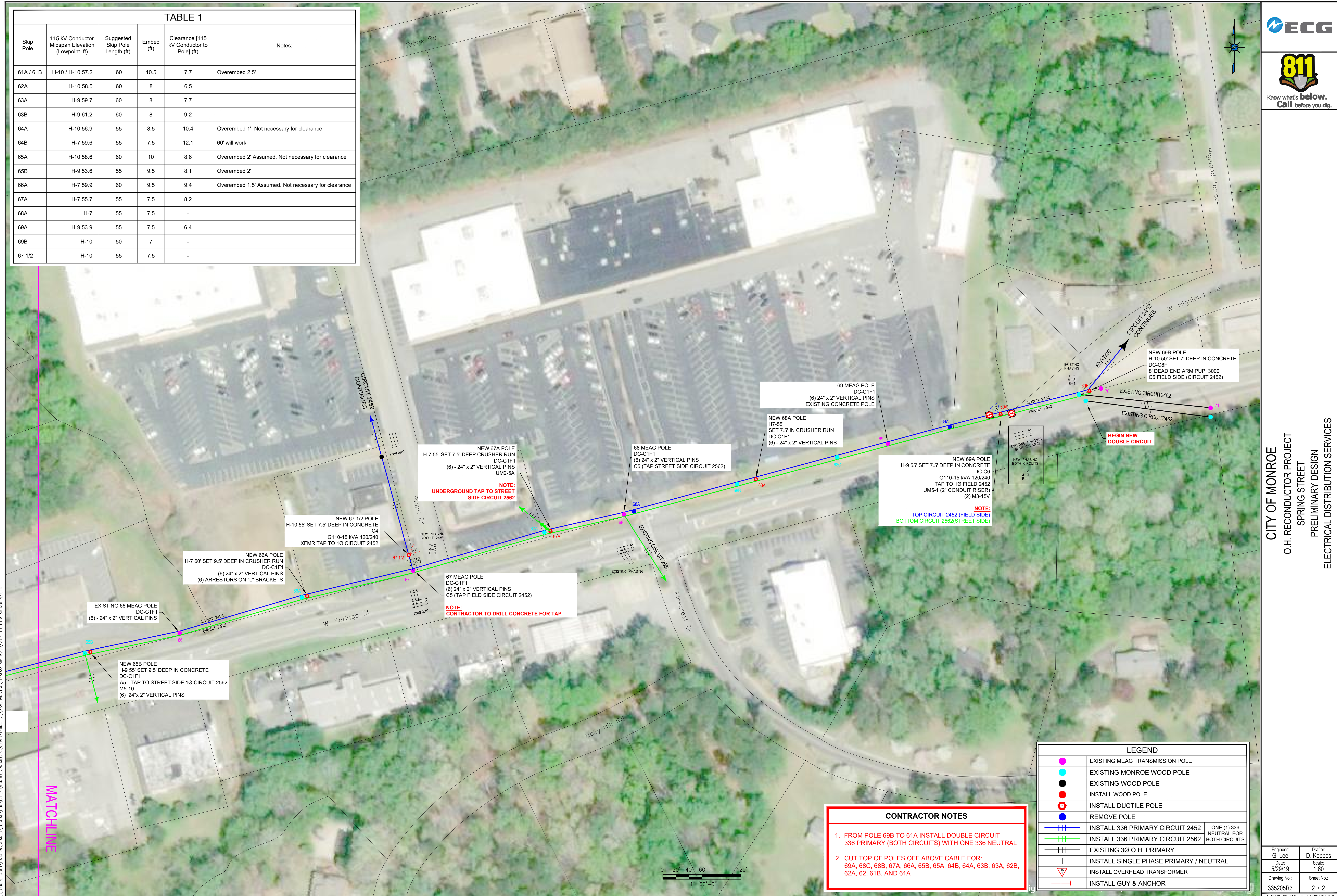
- FROM POLE 69B TO 61A INSTALL DOUBLE CIRCUIT 336 PRIMARY (BOTH CIRCUITS) WITH ONE 336 NEUTRAL
- CUT TOP OF POLES OFF ABOVE CABLE FOR: 69A, 68C, 68B, 67A, 66A, 65B, 65A, 64B, 64A, 63B, 63A, 62B, 62A, 62, 61B, AND 61A

LEGEND	
	EXISTING MEAG TRANSMISSION POLE
	EXISTING MONROE WOOD POLE
	EXISTING WOOD POLE
	INSTALL WOOD POLE
	INSTALL DUCTILE POLE
	REMOVE POLE
	INSTALL 336 PRIMARY CIRCUIT 2452
	INSTALL 336 PRIMARY CIRCUIT 2562
	EXISTING 3Ø O.H. PRIMARY
	INSTALL SINGLE PHASE PRIMARY / NEUTRAL
	INSTALL OVERHEAD TRANSFORMER
	INSTALL GUY & ANCHOR

Engineer: G. Lee	Drafter: D. Koppes
Date: 5/29/19	Scale: 1:60
Drawing No.: 335205R3	Sheet No.: 1 of 2

THIS IS A CAD DRAWING. DO NOT REUSE MANUALLY.

TABLE 1					
Skip Pole	115 kV Conductor Midspan Elevation (Lowpoint, ft)	Suggested Skip Pole Length (ft)	Embed (ft)	Clearance [115 kV Conductor to Pole] (ft)	Notes:
61A / 61B	H-10 / H-10 57.2	60	10.5	7.7	Overembed 2.5'
62A	H-10 58.5	60	8	6.5	
63A	H-9 59.7	60	8	7.7	
63B	H-9 61.2	60	8	9.2	
64A	H-10 56.9	55	8.5	10.4	Overembed 1'. Not necessary for clearance
64B	H-7 59.6	55	7.5	12.1	60' will work
65A	H-10 58.6	60	10	8.6	Overembed 2' Assumed. Not necessary for clearance
65B	H-9 53.6	55	9.5	8.1	Overembed 2'
66A	H-7 59.9	60	9.5	9.4	Overembed 1.5' Assumed. Not necessary for clearance
67A	H-7 55.7	55	7.5	8.2	
68A	H-7	55	7.5	-	
69A	H-9 53.9	55	7.5	6.4	
69B	H-10	50	7	-	
67 1/2	H-10	55	7.5	-	



CITY OF MONROE
O.H. RECONDUCTOR PROJECT
SPRING STREET
PRELIMINARY DESIGN
ELECTRICAL DISTRIBUTION SERVICES

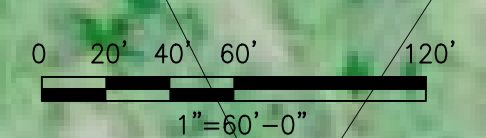
\\VCG08-4001\DATA\KAW\SHERID\EGCAD\080\LOTES\MONROE_PROJECTS\5205 (SPRING ST)_335205R3.DWG, Plotter on: 5/29/2019 1:00 PM by KOPPESTIC

MATCHLINE

CONTRACTOR NOTES

- FROM POLE 69B TO 61A INSTALL DOUBLE CIRCUIT 336 PRIMARY (BOTH CIRCUITS) WITH ONE 336 NEUTRAL
- CUT TOP OF POLES OFF ABOVE CABLE FOR: 69A, 68C, 68B, 67A, 66A, 65B, 65A, 64B, 64A, 63B, 63A, 62B, 62A, 62, 61B, AND 61A

LEGEND	
	EXISTING MEAG TRANSMISSION POLE
	EXISTING MONROE WOOD POLE
	EXISTING WOOD POLE
	INSTALL WOOD POLE
	INSTALL DUCTILE POLE
	REMOVE POLE
	INSTALL 336 PRIMARY CIRCUIT 2452
	INSTALL 336 PRIMARY CIRCUIT 2562
	EXISTING 3Ø O.H. PRIMARY
	INSTALL SINGLE PHASE PRIMARY / NEUTRAL
	INSTALL OVERHEAD TRANSFORMER
	INSTALL GUY & ANCHOR



Engineer: G. Lee	Drafter: D. Koppes
Date: 5/29/19	Scale: 1:60
Drawing No.: 335205R3	Sheet No.: 2 of 2

THIS IS A CAD DRAWING. DO NOT REUSE MANUALLY.