

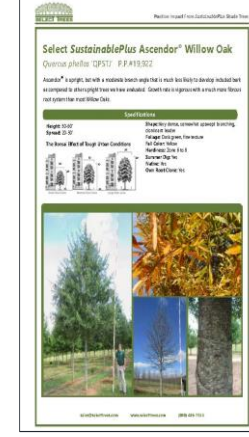
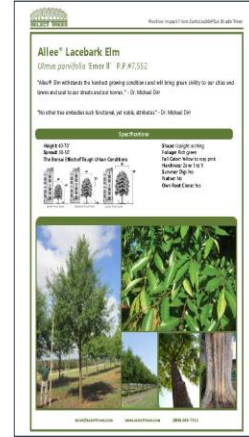
STREET TREE PLAN

CITY OF MONROE, GA

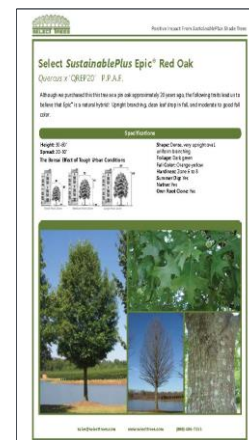
2020

GOALS AND OBJECTIVES

- **Provide Street Trees to all major road corridors into and thru the City of Monroe.** This will help the visual aesthetics of our major travel corridors, provide environmental quality, define scale and additional charm to our city.
- **Provide low maintenance Street Trees.** We will provide trees that can and will be suited to urban conditions and that will not overgrow into power utility lines.
- **Provide Street Trees that will last for generations.**
- **Provide Street Trees that will be diverse, provide seasonal color, and interest.**



Amelanchier arborea 'Autumn Brilliance'
Autumn Brilliance Serviceberry
25 x 25 tall/width



Ginkgo 'grindstone'
10' x 25'



Cercis x 'Pink Pom Poms' PP 27630
Pink Pom Poms Redbud 18' x 20' tall
15' wide. No Brown Pods or Seeds

W SPRING STREET

- 53ea Ginkgo 'Grindstone'
- 10' x 25' Maturity
- Located on the North and South of Spring from Quality Foods to Bridge



- Street trees help to create and soften visual distractions from urban landscapes which include power poles, utility lines, and signage.
- Provide intermittent shade along new sidewalk.
- Tree provide scale and sense of space.



M.L.K. JR BLVD AND W. SPRING STREET

4ea Red Oak 'Epic' ht 30-60 spread 20-30' 75'oc

4ea Willow Oak 'Ascendor' ht 30-60' spread 20-30' 75'oc

4ea Shumard Oak 'Panache' ht 30-60' spread 20-40' 75'oc

6ea Redbud 'Pink Pom Poms' ht 18' spread 25' 50'oc

6ea Serviceberry 'Autumn Brilliance' ht 25' spread 25' 75'oc

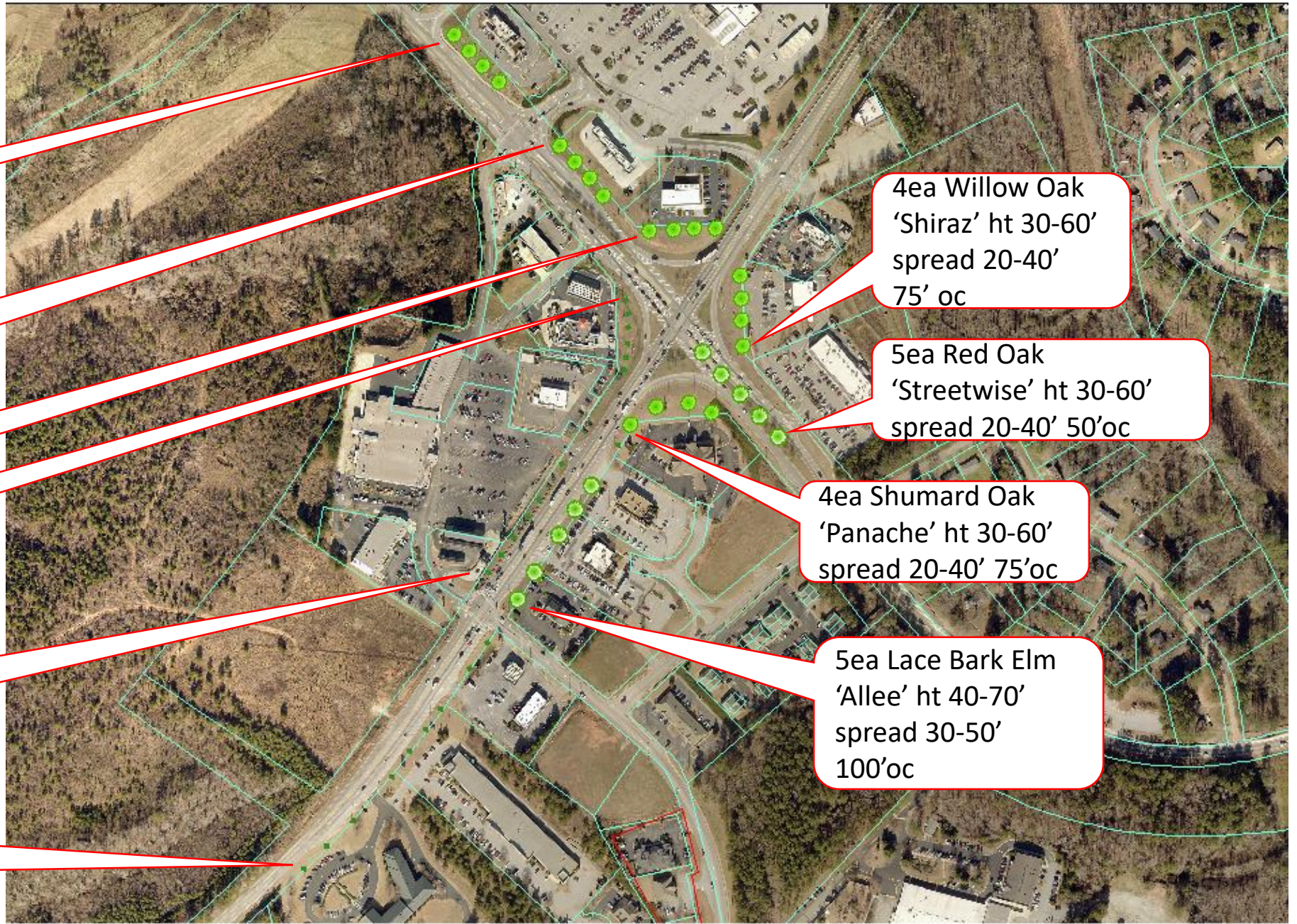
9ea Serviceberry 'Autumn Brilliance' ht 25' spread 25' 75'oc

4ea Willow Oak 'Shiraz' ht 30-60' spread 20-40' 75' oc

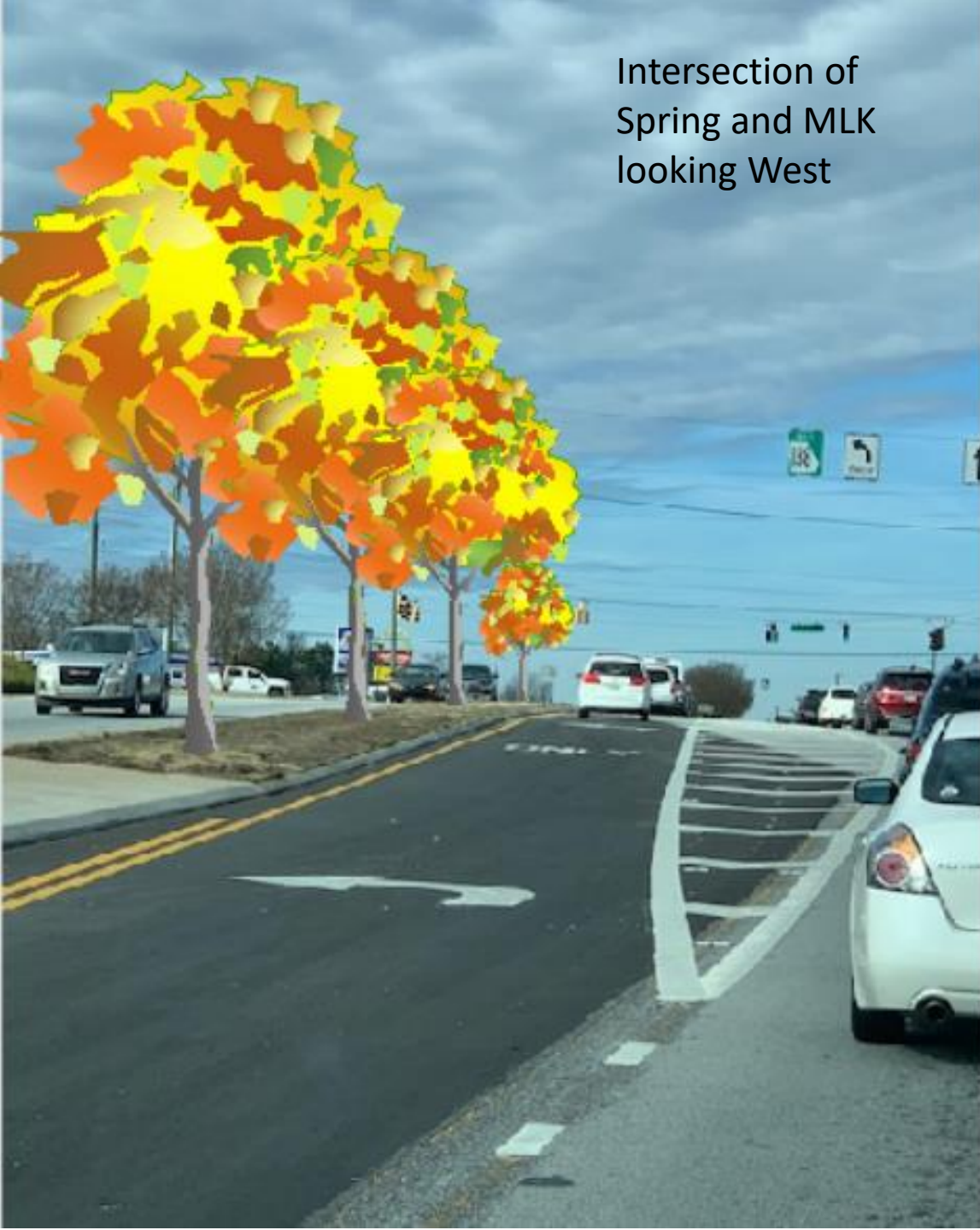
5ea Red Oak 'Streetwise' ht 30-60' spread 20-40' 50'oc

4ea Shumard Oak 'Panache' ht 30-60' spread 20-40' 75'oc

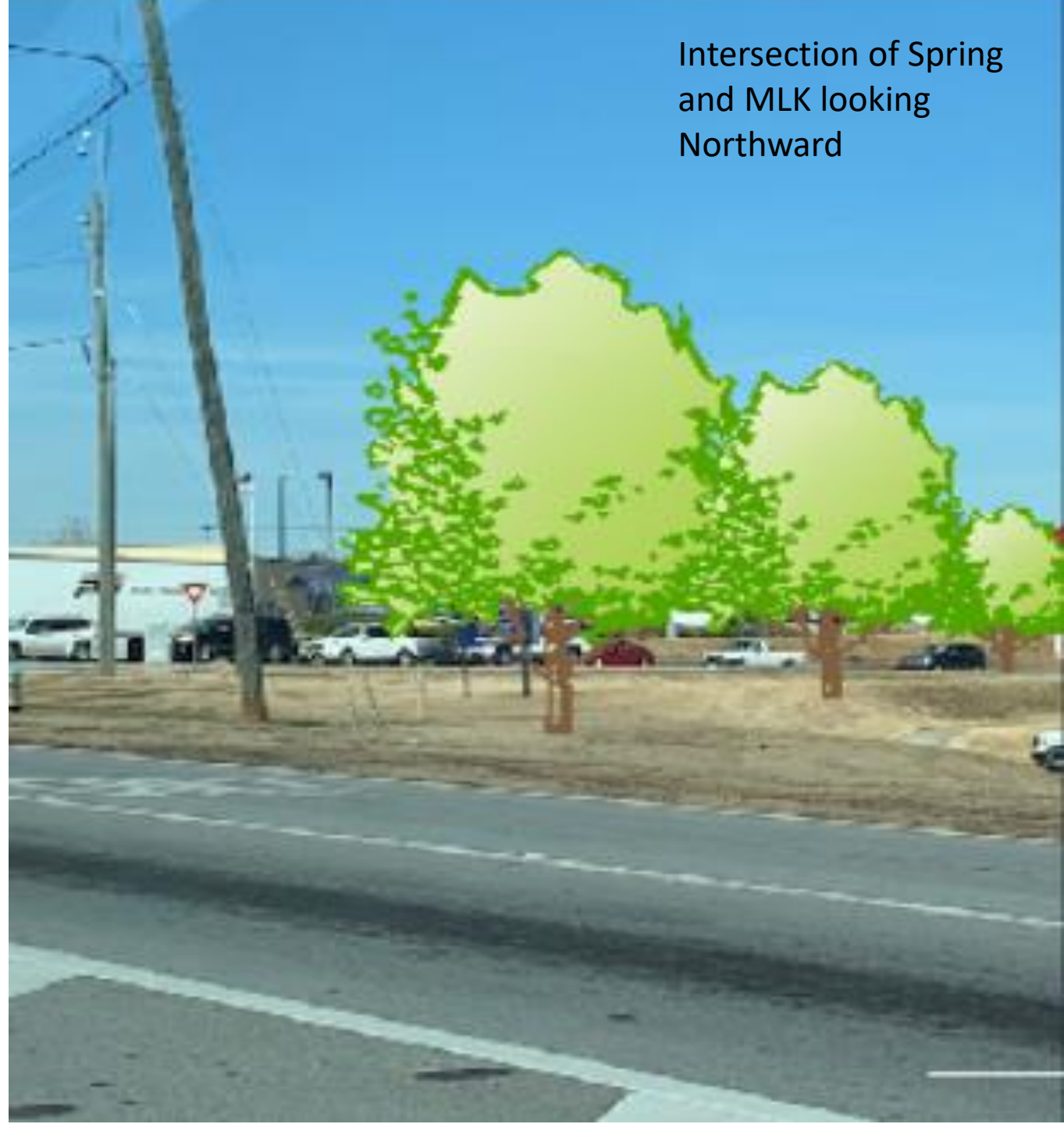
5ea Lace Bark Elm 'Allee' ht 40-70' spread 30-50' 100'oc



Intersection of
Spring and MLK
looking West



Intersection of Spring
and MLK looking
Northward



Intersection of MLK and Spring Street looking toward Walmart



EAST SPRING STREET

17ea American
Hornbeam 'Palisade'
Ht 20-40' Spread 10-20'
100' oc

17ea American
Hornbeam
'Palisade'
Ht 20-40' Spread
10-20' 100' oc



East Spring Street
looking West toward
Courthouse



EAST SPRING STREET CONTINUED

9ea Redbud 'Pink Pom
Poms' Ht 18-20' Spread
15' 100'oc

3ea Ginko 'Grindstone'
Ht 20-25' Spread 8-10'
100' oc

8ea Ginko 'Grindstone'
Ht 20-25' Spread 8-10'
100'oc

10ea Redbud 'Pink Pom
Poms' Ht 18-20' Spread 15'
100' oc



MATERIAL COST

ESTIMATE FOR SPRING STREET TREE PLANTING IMPROVEMENTS					
ITEM	UNIT	QTY	UNIT COST	TOTAL	
LANDSCAPE IMPROVEMENTS FOR EAST SPRING STREET					
2" CARPINUS CAROLINIANA - AMERICAN HORNBEAM 'PALISADE'	EA	37.0	\$280.00	\$10,360.00	
2" GINKO BILOBA - GINKO 'GRINDSTONE'	EA	11.0	\$285.00	\$3,135.00	
2" CERCIS CANADENSIS - RED BUD 'PINK POM POMS'	EA	11.0	\$295.00	\$3,245.00	
LANDSCAPE IMPROVEMENTS FOR WEST SPRING STREET					
2" AMELANCHIER ARBOREA - 'AUTUMN BRILLIANCE' SERVICEBERRY	EA	9.0	\$280.00	\$2,520.00	
2" GINKO BILOBA - GINKO 'GRINDSTONE'	EA	53.0	\$285.00	\$15,105.00	
2" CERCIS CANADENSIS - RED BUD 'PINK POM POMS'	EA	15.0	\$295.00	\$4,425.00	
4" QUERCUS FALCATA - 'STREETWISE' RED OAK	EA	5.0	\$500.00	\$2,500.00	
4" QUERCUS FALCATA - 'EPIC' RED OAK	EA	4.0	\$500.00	\$2,000.00	
4" QUERCUS PELLOS - 'ASCENDOR' WILLOW OAK	EA	4.0	\$500.00	\$2,000.00	
4" QUERCUS PELLOS - 'SHIRAZ' WILLOW OAK	EA	4.0	\$500.00	\$2,000.00	
4" QUERCUS SHUMARDII - 'PANACHE' SHUMARD OAK	EA	8.0	\$500.00	\$4,000.00	
4" ULMUS PARVIFOLIA 'EMERII' - ALLEE LACEBARK ELM	EA	5.0	\$450.00	\$2,250.00	
note: cost do not include installation			TOTAL	\$53,540.00	

CONCLUSION

- Provide a phased approach to implement plan.
- Provide funding annually.
- Provide zoning ordinance to enhance street tree plantings on new development 2 feet outside of right-of-way on private property. *Specify type of species, size, spacing with design rationale and goals and objectives.*
- Engage and provide incentives for citizens to plant adjacent to all sub-collector roads approximately 10' behind the right-of-way on private property thru out the city.
- Engage businesses to participate in tree planting along the right-of-way (two feet outside) on private property as well as tree plantings in parking lots.
- Educate the public on the benefits of trees have on the environment.