



## Utility Committee Meeting

### AGENDA

June 3, 2008

---

#### I. CALL TO ORDER

#### II. MATTERS BEFORE COMMITTEE

1. [Discussion / Approval - Bid Solicitation Raw Water Main](#)
2. [Purchase - Takeuchi Rubber Track Loader for Sewer Dept.](#)
3. [Approval - CATV Upgrade](#)
4. [Discussion - Easement for GTC \(GA Transmission\)](#)
5. [Approval - Plant Vogtle Contract](#)
6. [Approval - Underground Primary Purchase](#)
7. [Approval - Utility Building Projects](#)

#### III. ADJOURN



## Utility Committee Meeting

### AGENDA

June 3, 2008

---

**Item:**

Discussion / Approval - Bid Solicitation Raw Water Main

**Department:**

**Additional Information:**

**Financial Impact:**

**Budgeted Item:**

**Recommendation / Request:**

Viewing Attachments Requires Adobe Acrobat. [Click here](#) to download.

**Attachments / click to download**

 [Raw Water Main Information](#)

Attachment number 1  
Page 1 of 1

# Georgia Department of Natural Resources

Drinking Water Permitting & Engineering Program  
2 MLK, Jr. Drive, S E , East Floyd Tower, Suite 1362, Atlanta, Georgia 30334

Noel Holcomb, Commissioner  
Carol A. Couch, Ph.D., Director  
Environmental Protection Division

May 19, 2008

Mr. Julian Jackson, City Mgr.  
City of Monroe Water System  
P.O. Box 1249  
Monroe, GA 30655

**RE: Plan Approval**

City of Monroe WTP, Transmission Main  
City of Monroe Water System (ID# 2970001)  
Walton County, Georgia

Dear Mr. Jackson:

The submitted plans and specifications for the raw transmission main lines to service City of Monroe WTP have been reviewed and are hereby approved by the Drinking Water Permitting & Engineering Program of the Environmental Protection Division.

Reminder all materials used and come into contact with drinking water during its distribution shall not adversely affect drinking water quality and public health and must be certified for conformance with American National Standards Institute/National Sanitation Foundation Standard 61 (ANSI/NSF Standard 61).

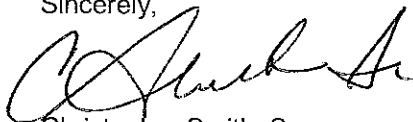
The Division's approval includes the installation of approximately 15,500 LF of 30-inch DIP pipe, related valves and appurtenances to service WTP in this project.

Please be reminded that the construction must meet all the requirements of the GA Rules of Safe Drinking Water, Chapter 391-3-5. In accordance with the Chapter 391-3-5- 05(6):

"Upon completion of the installation of the public water system or any modification, the Owner must send to the Division a statement from the Engineer who prepared the plans and specifications that the system, as installed, is in accordance with the approved plans and specifications."

This approval is valid for one (1) year from the date of this letter. If the construction has not begun by that date, the Division may choose to reevaluate the project with regard to the Rules and Regulations in effect at that time. Two (2) sets of the approved plans is returned herewith and one (1) set will be sent to your consulting engineer. If you have any questions, please contact this office at the number below.

Sincerely,



Christopher Smith, Sr.  
Environmental Engineer  
Drinking Water Permitting & Engineering Program  
Phone: (404) 463-5548

cc: Mr. Scott Trott, PE – Wiedeman and Singleton, Inc.  
Mr. Kirk Chase, West Unit DWPEP  
File: WSID# 2970001

Item # 1



## Utility Committee Meeting

### AGENDA

June 3, 2008

**Item:**

Purchase - Takeuchi Rubber Track Loader for Sewer Dept.

**Department:**

Water and Gas

**Additional Information:****Financial Impact:****Budgeted Item:**

This is a Budgeted Item

**Recommendation / Request:**

Viewing Attachments Requires Adobe Acrobat. [Click here](#) to download.

**Attachments / click to download**

 [Purchase - Takeuchi Track Loader](#)

# TAKEUCHI®

## TL150

### Rubber Track Loader

- Engine Horsepower: 97 HP
- Operating Weight: 10,692 lbs.
- Tipping Load: 7,056 lbs.
- Bucket Breakout Force: 8,692 lbs.



- Rubber tracks combine the capabilities of a track loader with the versatility of operation on improved surfaces
- Tilt-back operators compartment offers quick and easy access to the engine and hydraulic system
- Emergency engine shutdown system helps protect the engine from damage due to low oil pressure or high coolant temperature
- Pilot operated joystick controls provide precise, fingertip control of loader and travel functions
- Hydrostatic drive system is directly coupled with planetary final drives for a durable and efficient power transfer system
- Track undercarriage provides the flotation needed for working in muddy or loose ground conditions and delivers the traction required for excavating tough materials
- Spacious and comfortable operators compartment allows for productive and fatigue-free operation

▶ All **TAKEUCHI** excavators and loaders share our commitment to the highest standards in quality and performance. Look beyond the specifications of the **TL150** and you will find a rich set of features which make the **TL150** reliable to own, comfortable to operate and a performance leader on the job.

When you invest in a **TAKEUCHI**, you receive over 5 decades of compact track equipment innovation, the quality assurance of ISO-9001 certification and responsive after sales support from a specialized industry leader.

Try a **TAKEUCHI** today and experience the difference for yourself.



3022 PEACHTREE INDUSTRIAL BLVD.  
BUFORD, GA 30518  
PH: 770-614-5730  
FX: 770-614-5492

"A DIVISION OF COBB COUNTY TRACTOR CO."

City of Monroe  
Attn: Rodney Middlebrooks

4-30-08

Takeuchi TL150 rubber track loader, cab heat and air with an 80" tooth bucket.  
\$48,300.00

Note: Prices are subject to change. All new Takeuchi machines have a 2 year/2000 hour warranty. The tooth bucket can be exchanged for an 80" smooth bucket upon request, which would not affect the price/quote.



# SALES QUOTE

## HERTZ EQUIPMENT RENTAL CORPORATION

Office: (770) 725-2092

Branch #: 9335

Fax: (770) 725-2674

Cell: (404) 391-0661

Email: [tewilliams@hertz.com](mailto:tewilliams@hertz.com)

Sales Rep: Travis Williams

Date: 5/27/2008

### Customer Information

Name: **City of Monroe Utilities**

Contact: Rodney Middlebrooks

Address: P O Box 725

City, State: Monroe, Ga

Zip: 30655

Phone: **(404) 427-3482**

Fax:

### Job Site Information

Name:

Contact:

Address:

City, State:

Zip:

Phone:

Fax:

Qty	Description	Part Number	Unit Price	Unit of Measure	Extended Price
1	Make: Takeuchi Model: TL150 Rubber Track Crawler Loader Enclosed cab smooth bucket	New	52,700.00		52,700.00
			Sub Total		52,700.00
			Transportation Charges		
			Estimated Taxes		0.00
			<b>Estimated Total</b>		<b>\$52,700.00</b>

Sales Quote is valid through: 30 days

### Comments :

Specs available.

Item # 2



## Utility Committee Meeting

### AGENDA

June 3, 2008

**Item:**

Approval - CATV Upgrade

**Department:**

Electric and Telecommunications

**Additional Information:**

CATV outside plant upgrade. This will cost \$800,000. This is the first step in a 2 part project to bring the CATV plant up to date.

**Financial Impact:****Budgeted Item:**

This a Budgeted Item

**Recommendation / Request:**

Viewing Attachments Requires Adobe Acrobat. [Click here](#) to download.

**Attachments / click to download**

 [CATV Upgrade](#)

 [CATV Upgrade](#)

 [CATV Upgrade](#)

 [CATV Upgrade](#)



**PLANT**                      APPROXIMATELY 200 MILES OF 550MHz PLANT  
EXISTING ACTIVES CAPABLE OF 750MHz  
20 EXISTING NODES, SA 6920 AND OLSEN OMNI II  
(EST) 25 OLSEN OMNI II NODES AFTER PROJECTED  
NODE SPLITS TO CUT DOWN AMP CASCADE  
6920 SA SYSTEM II AND III AMPLIFIERS  
HGD's, LGD's, UBT's, BT's, AND LE's  
SA TAPS AND PASSIVES  
GILBERT CONNECTORS  
1 HEAD END

**OBJECTIVE**                TO BALANCE AND SWEEP CITY OF MONROE'S  
OUTSIDE CABLE PLANT OUT TO 870 MHz IN ORDER TO  
ASSURE FULL SPECTRUM AVAILABILITY, THE LAUNCH  
OF VOICE OVER INTERNET PROTOCOL, ALONG WITH  
BETTER PICTURE QUALITY, ELIMINATE MODEMS FROM  
DROPPING OUT, AND REDUCE SERVICES CALLS

**DESIGN**                    COORDINATE AND DESIGN EXISTING CABLE  
PLANT. NEW DESIGN WILL TAKE OLD BANDWIDTH OF  
550 MHz AND UPGRADE TO A NEW BANDWIDTH OF  
870 MHz. THIS WILL ALLOW THE USE OF THE UPPER  
FREQUENCY SPECTRUM, THAT DID NOT EXIST WITH  
OLD PLANT. NEW DESIGN WILL INCLUDE PROPER  
OPERATING LEVELS FOR THE LOW BAND AND THE  
HIGH BAND ALONG WITH A PILOT CHANNEL FOR AGC.  
ALL TO BE IN SPECIFICATION WITH FCC. EACH NODE  
WILL BE DESIGNED FOR ALL ACTIVES TO FALL IN  
PLACE OF EXISTING ACTIVE. MINIMUM ACTIVES ADDED  
ONLY IN LOW LEVEL AND NODE SPLITS. EACH NODE  
DESIGN WILL COME WITH PAPER COPIES (MAP) AND  
DISKS (CD) ALONG WITH A MATERIAL LIST (BOM)

**UPGRADE AMPS**            OPEN EXISTING AMP AND REMOVE MODULE  
AND SEIZURE PLUGS. OPEN AND REMOVE MODULE  
AND SEIZURE PLUGS FROM NEW AMP. PLACE NEW  
SEIZURE PLUGS AND MODULE IN OLD AMP. REMOVE  
OLD LID AND REPLACE WITH NEW LID. PLUG IN NEW  
POWER PACK AND SHUNTS

**BALANCE**                    BALANCING OF ALL ACTIVES TO + / - 2 db AT

SPECIFIED OPERATING LEVELS, DOCUMENTATION OF  
EOL LEVELS AT SPECIFIED FREQUENCIES

**DOWNSTREAM** TO ALIGN AND SWEEP EACH ASSIGNED NODE OUT  
TO 870MHz. SWEEP AND COMPLETE DOCUMENTATION  
AT ALL AMPLIFIERS AND EOL's.

**UPSTREAM** TO ALIGN AND SWEEP EACH ASSIGNED NODE  
BETWEEN 5MHz AND 40MHz. SWEEP AND COMPLETE  
DOCUMENTATION AT ALL AMPLIFIERS AND EOL's

**SWEEP** AT THE NODE LOCATION , VOLTAGE READINGS  
FOR BOTH FORWARD (AC) AND RETURN (DC) WILL BE  
TAKEN TO INSURE BOTH ARE WORKING PROPERLY.  
LEVELS ON THE PREDEFINED 4 ANALOG CARRIERS  
SHALL BE TAKEN ON THE INPUT AND THE OUTPUT. A  
PREDEFINED CARRIER WILL BE INJECTED AT THE  
NODE ON A PREDEFINED FREQUENCY, WHICH WILL  
BE READ AT THE HEAD END, IN ORDER TO SET UP THE  
RETURN. ONCE LEVELS ON RECEIVER IN THE HEAD  
END ARE RIGHT, A RAW PICTURE WILL BE TAKEN ON  
BOTH THE FORWARD AND THE RETURN. A REFERENCE  
ON BOTH TO FOLLOW. LEVELS ON THE MAIN OUTPUT  
WILL BE RECORDED.

AT EACH ACTIVE LOCATION, VOLTAGE READINGS  
FOR BOTH FORWARD (AC) AND RETURN (DC) WILL BE  
TAKEN TO INSURE BOTH ARE WORKING PROPERLY.  
LEVELS ON THE 4 PREDEFINED ANALOG CARRIES  
SHALL BE TAKEN AND RECORDED ON BOTH THE INPUT  
AND THE OUTPUT. LEVEL READINGS WILL BE STORED  
IN AN AUTO TEST FORMAT OF THE SDA 5000 METER.  
REFERENCED SWEEP SHOTS WILL BE TAKEN AND  
STORED ON BOTH THE FWD (DOWNSTREAM) AND THE  
REV (UPSTREAM). LEVELS AND SWEEP RESPONSES  
MUST FALL WITHIN THE PREDEFINED SPECIFICATIONS  
THE FWD SWEEP RESPONSE PTV FORMULA IS  $N/2 + 2.5$   
THE REV SWEEP RESPONSE PTV IS NOTHING GREATER  
THAN 3.0. THE TELEMETRY LEVEL TO BE 1.5 +/- OF THE  
RECORDED TELEMETRY AT THE NODE.

**END OF LINE** AT THE END OF LINE (EOL's), LEVELS WILL BE  
TAKEN AND RECORDED ALONG WITH RETURN SHOTS.

THESE ARE TO VERIFY OUTPUT LEVELS AT THE TAP ARE +/- 2db OF THE DESIGN AND THAT THE RETURN IS WORKING TO THE END.

## **TROUBLE SHOOTING**

ANY LEVEL OR SWEEP RESPONSE THAT DOES NOT MEET SPECIFICATIONS MUST BE TROUBLESHOT, (TDR OF BAD CABLE) REPAIRED (RE-SPLICE CABLE, CONNECTOR, CHANGE OUT FACE PLATE, ETC.) OR EXPLAINED

## **NOISE SUPPRESSION**

AT THE COMPLETION OF EACH NODE SWEPT, A CARRIER TO NOISE TEST WILL BE RUN. THE CRITERIA FOR THIS IS IN TWO PARTS, 5MHz to 20MHz AND 20MHz to 40MHz. AT 5 to 20 THE NOISE CAN NOT BE GREATER THAN 20DB FROM THE BOTTOM OF THE NOISE FLOOR WHICH IS AT 40db DOWN. AT 20 to 40, THE SEPARATION BETWEEN THE TOP OF THE MODEM AND THE BOTTOM OF THE NOISE FLOOR NEEDS TO BE 40db, WITH A -3db WINDOW WHICH MAKES IT NOT LESS THAN 37db. ANY NODES NOT PASSING THE C/N TEST, THE NOISE WILL BE SUPPRESSED UNTIL THE NODE PASSES. THAT WILL INCLUDE THE PLACEMENT OF HIGH PASS FILTERS.

## **PROGRESS REPORTS**

STREET SHEETS AND HIGH PASS FILTER LOGS WILL BE E-MAILED TO DISPATCH ON A DAILY BASIS. UPDATES ON PRODUCTION, C/N REPORTS AND OVERALL JOB REPORTS WILL BE E-MAILED ON A DAILY AND OR WEEKLY BASIS. PLANT DISCREPANCY REPORTS (PDR) WILL HAVE A COPY OF A PRINT WITH CABLE SPANS HIGHLIGHTED AND A COVER SHEET WITH STREET ADDRESSES AND FOOTAGES. THEY WILL BE TURNED IN ON A DAILY BASIS FOLLOW BY AN E-MAIL OF TOTAL PDRs IN EACH NODE

## **SAFETY**

ALL WORK WILL BE IN COMPLIANCE OF ALL LOCAL, STATE AND FEDERAL SAFETY REQUIREMENTS ALL TRAFFIC CONTROL AND ROAD SAFETY CONCERNS SHALL MEET ALL GEORGIA DOT AND OR ANY LOCAL GOVERNMENT REQUIREMENTS

## **PROJECT TIMELINES**

ALL WORK IN NODES WILL BE DONE IN A VERY FAST PACE MANNER. TIME FRAME FOR COMPLETION OF

CHANGING OUT ACTIVES, SWEEP AND ANY SPLICING IN EACH NODE IS **ONE DAY**. EACH NODE WILL CONSIST OF AS MANY TECHNICIANS AS IT TAKES TO COMPLETE THIS WORK. CUSTOMER IMPACTING WILL BE AT A **MINIMUM**, WITH SHORT TIME FRAMES OF CABLE BEING OFF AND CABLE FLASHING. NOISE SUPPRESSION WILL BE DONE USING A SDA 5000 METER, NOT PULLING PADS AND LEAVING LEGS OFF. COMPLETION OF 20 NODE PROJECT, PROVIDING NO RAIN AND NO SHORTAGE OF EQUIPMENT AND NO HOLDUPS THAT ARE BEYOND OUR CONTROL, SHOULD BE NO MORE THAN **ONE MONTH**.

**PROJECT  
NOTES**

AFTER RIDING OUT THE EXISTING CABLE SYSTEM

- THERE ARE TWO DIFFERENT TYPES OF NODES. ONE BEING THE SA 6920 AND THE OTHER BEING OLSEN OMNI II. THE RETURN INPUT LEVEL TO THESE NODES ARE NOT THE SAME. THE RETURN INPUT TO THE SA 6920 IS 17db, ALONG WITH THE ACTIVES. IF NEW GAIN MAKER IS INSTALLED, THEN THE RETURN INPUT IS 20db. ON THE OLSEN OMNI II NODES, RETURN INPUT IS BASED ON THE AMOUNT OF LOAD DATA PER FREQUENCY INSIDE THE THE BANDWIDTH USED FOR THE RETURN. IN THIS CASE, BASED ON EXISTING PLANT, 15db WILL BE THE RETURN INPUT. IN ORDER TO ACHIEVE THE SAME TELEMTRY LEVEL FROM THE NODE TO THE LAST ACTIVE, INJECTING A CARRIER WILL BE NEEDED. INJECT A CARRIER IN THE FIRST ACTIVES OUT AND THEN READ IT AT THE NODE. MAKE PAD ADJUSTMENTS IN THE FIRST ACTIVES OUT UNTIL A READING OF 15db INPUT IS ACHIEVED.

-THE CASCADE IN SOME NODES ARE TO LONG. NODE SPLITS WILL PROBABLY OCCUR. AN ESTIMATION OF FIVE NEW NODES WILL BE ADDED TO THE JOB. THIS ESTIMATE IS ON PAGE ONE.

-TRUNK LEGS ARE TIED IN THE MAIN OUT AND THE AUX LEGS. THE NEW DESIGN WILL NEED TO RUN BOTH THE TRUNK AND THE FEEDER OUT AT THE SAME LEVEL. THIS WILL PREVENT THE RE-SPLICING OF THOSE LEGS, KEEP LEVELS THE SAME THROUGH OUT THE SYSTEM AND KEEP THE TIME FRAME, IN WHICH THE CUSTOMER IS OUT, TO A **MINIMUM**.

**PROJECT**

A SUPERVISOR WITH OVER **20 YRS EXPERIENCE**

## NOTES

WILL BE ON SITE FROM THE START TO FINISH OF THE PROJECT. HE HAS WORKED IN THIS SYSTEM BEFORE, DOING SWEEP AND NOISE SUPPRESSION. HE WILL CO-ORDINATE ALL THE WORK AND BE RESPONSIBLE FOR ALL DOCUMENTATION AND COMMUNICATIONS TO THE CABLE OFFICE.

WE WANT TO OFFER A TRAINING SESSION ON THE NEW GAIN MAKER EQUIPMENT THAT IS GOING IN YOUR SYSTEM. THIS TRAINING SESSION WILL BE FOR ALL OF YOUR TECHNICIANS, AT **NO COST**. WE WILL HAVE CLASS ON THE EQUIPMENT, HOW IT'S DESIGNED AND HOW IT WORKS AND THEN TAKE TECH'S IN THE FIELD. THIS WILL HELP THEM GET A BETTER UNDERSTANDING OF THE EQUIPMENT ONCE IT'S SPLICED IN. WE WILL SHOW THEM HOW IT IS SWEEPED, NOISE SUPPRESSED, CERTIFIED AND HOW TO TROUBLE SHOOT EACH LEG. ONCE THEY HAVE A BETTER UNDERSTANDING OF THE EQUIPMENT, THEN THEY WILL RIDE ALONG WITH ONE OF OUR TECH'S. THIS WILL FURTHER THEIR KNOWLEDGE AND ALLOW US TO ANSWER ANY OTHER QUESTIONS THEY MIGHT HAVE. WE GUARANTY ALL OUR WORK AND AFTER THE JOB IS COMPLETE AND WE ARE GONE, WE WILL STILL ANSWER ANY QUESTIONS THAT MAY ARISE.

## 1st PRICING

COMPOSITE PRICE PER FOOT INCLUDES UPGRADE OF ALL AMPLIFIERS AND LINE EXTENDERS, FORWARD / RETURN ALIGNMENT AND SWEEP, TROUBLESHOOTING SPLICING, NOISE SUPPRESSION, AND C/N TEST.

.48 per foot

DESIGN OF CABLE SYSTEM, INCLUDING MAPS, DISC'S AND BOM'S.

\$271 per mile

or approx. .05 per foot

Second pricing on next page

**PROPOSE**

I GO IN AND DO THE SAME JOB AS ABOVE, WITH A LONGER TIME FRAME, **MYSELF**. I WILL GO AS FAST AS I CAN, WITHOUT JEOPARDIZING QUALITY OF WORK AND OUTAGES.

INSTEAD OF PAYING FOR ALL THE WORK ON A WEEKLY INVOICE, I PULL A DRAW ONCE A WEEK. I BILL A CERTAIN DOLLAR AMOUNT, THAT WE AGREE ON, ONCE A WEEK, UNTIL JOB IS PAID IN FULL. THE JOB WILL BE DONE BEFORE ALL MONEY IS PAID IN FULL, ALLOWING YOU TO DRAW INTEREST ON YOUR MONEY.

AFTER JOB IS COMPLETE, I WILL COME TO WORK AS AN EMPLOYEE FOR THE CABLE DEPARTMENT. WE SIT DOWN AND COME TO TERMS ON HOW LONG AND AT WHAT PRICE. IF EVERYTHING WORKS WELL IT COULD BE ON A PERMANENT BASIS.

**2nd PRICING**

COMPOSITE PRICE PER FOOT INCLUDES UPGRADE OF ALL AMPLIFIERS AND LINE EXTENDERS, FORWARD / RETURN ALIGNMENT AND SWEEP, TROUBLESHOOTING SPLICING, NOISE SUPPRESSION, AND C/N TEST.

.35 per foot

DESIGN OF CABLE SYSTEM, INCLUDING MAPS, DISC'S AND BOM'S.

\$235 per mile

or approx. .04 per foot

**KESCO INC.  
1841 RIVERMIST DR.  
MONROE, GA 30655**

KEVIN E SMITH  
770-653-7303  
[kesco@monroeaccess.net](mailto:kesco@monroeaccess.net)





www.monroega.org

## OCCUPATIONAL TAX CERTIFICATE CITY OF MONROE, GEORGIA

ISSUED IN ACCORDANCE WITH THE ORDINANCES OF THE  
CITY OF MONROE

**SIRAH CONTRACTING, INC.**  
**155 BANKERS BLVD. SUITE C100**

1-5 EMPLOYEES

**Mailing Address:**

SIRAH CONTRACTING, INC.  
STEVIE GARCIA, CORPORATION  
155 BANKERS BLVD  
SUITE # C100  
MONROE, GA 30655

**LICENSE NUMBER**

25782

**ACCOUNT NUMBER**

2121

Non-Transferable  
Subject to be revoked if abused

This is a receipt for occupational tax fees from Jan. 1 - Dec.31, 2008

THIS LICENSE EXPIRES: 12-31-2008

THIS LICENSE MUST BE DISPLAYED IN A CONSPICUOUS PLACE



Control No. 0148877

# STATE OF GEORGIA

## Secretary of State

Corporations Division  
315 West Tower  
#2 Martin Luther King, Jr. Dr.  
Atlanta, Georgia 30334-1530

## CERTIFICATE OF EXISTENCE

I, Karen C Handel, Secretary of State and the Corporations Commissioner of the state of Georgia, hereby certify under the seal of my office that

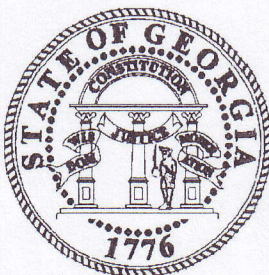
### SIRAH CONTRACTING, INCORPORATED

#### Domestic Profit Corporation

was formed or was authorized to transact business on 11/05/2001 in Georgia. Said entity is in compliance with the applicable filing and annual registration provisions of Title 14 of the Official Code of Georgia Annotated and has not filed articles of dissolution, certificate of cancellation or any other similar document with the office of the Secretary of State.

This certificate relates only to the legal existence of the above-named entity as of the date issued. It does not certify whether or not a notice of intent to dissolve, an application for withdrawal, a statement of commencement of winding up or any other similar document has been filed or is pending with the Secretary of State.

This certificate is issued pursuant to Title 14 of the Official Code of Georgia Annotated and is prima-facie evidence that said entity is in existence or is authorized to transact business in this state.



WITNESS my hand and official seal of the City of Atlanta and the State of Georgia on 18th day of April, 2008

Karen C Handel  
Secretary of State

Certification Number: 1998843-1    Reference:  
Verify this certificate online at <http://corp.sos.state.ga.us/corp/soskb/verify.asp>



**ACORD CERTIFICATE OF LIABILITY INSURANCE**CSR DB  
SIRAH-1DATE (MM/DD/YYYY)  
02/29/08

<b>PRODUCER</b> t Mountain Insurors . Box 698 Snellville GA 30078 Phone: 770-979-3215 Fax: 770-978-7350		THIS CERTIFICATE IS ISSUED AS A MATTER OF INFORMATION ONLY AND CONFERS NO RIGHTS UPON THE CERTIFICATE HOLDER. THIS CERTIFICATE DOES NOT AMEND, EXTEND OR ALTER THE COVERAGE AFFORDED BY THE POLICIES BELOW.	
<b>INSURED</b>  Sirah Contracting, Inc. 155 Bankers Blvd. Bldg C-100 Monroe GA 30655		<b>INSURERS AFFORDING COVERAGE</b>	<b>NAIC #</b>
		INSURER A: Ohio Casualty Group	
		INSURER B: Darwin National Assurance Co	
		INSURER C:	
		INSURER D:	
		INSURER E:	

**COVERAGES**

THE POLICIES OF INSURANCE LISTED BELOW HAVE BEEN ISSUED TO THE INSURED NAMED ABOVE FOR THE POLICY PERIOD INDICATED. NOTWITHSTANDING ANY REQUIREMENT, TERM OR CONDITION OF ANY CONTRACT OR OTHER DOCUMENT WITH RESPECT TO WHICH THIS CERTIFICATE MAY BE ISSUED OR MAY PERTAIN, THE INSURANCE AFFORDED BY THE POLICIES DESCRIBED HEREIN IS SUBJECT TO ALL THE TERMS, EXCLUSIONS AND CONDITIONS OF SUCH POLICIES. AGGREGATE LIMITS SHOWN MAY HAVE BEEN REDUCED BY PAID CLAIMS.

INSR ADD'L LTR INSRD	TYPE OF INSURANCE	POLICY NUMBER	POLICY EFFECTIVE DATE (MM/DD/YY)	POLICY EXPIRATION DATE (MM/DD/YY)	LIMITS	
A	GENERAL LIABILITY	PCKG53723016	03/01/08	03/01/09	EACH OCCURRENCE	\$ 1,000,000
	<input checked="" type="checkbox"/> COMMERCIAL GENERAL LIABILITY				DAMAGE TO RENTED PREMISES (Ea occurrence)	\$ 300,000
	<input type="checkbox"/> CLAIMS MADE <input checked="" type="checkbox"/> OCCUR				MED EXP (Any one person)	\$ 10,000
					PERSONAL & ADV INJURY	\$ 1,000,000
					GENERAL AGGREGATE	\$ 2,000,000
					PRODUCTS - COMP/OP AGG	\$ 2,000,000
					GEN'L AGGREGATE LIMIT APPLIES PER:	
<input checked="" type="checkbox"/> POLICY <input type="checkbox"/> PRO-JECT <input type="checkbox"/> LOC						
A	AUTOMOBILE LIABILITY	CAS53723016	03/01/08	03/01/09	COMBINED SINGLE LIMIT (Ea accident)	\$ 1,000,000
	<input checked="" type="checkbox"/> ANY AUTO				BODILY INJURY (Per person)	\$
	<input type="checkbox"/> ALL OWNED AUTOS				BODILY INJURY (Per accident)	\$
	<input checked="" type="checkbox"/> SCHEDULED AUTOS				PROPERTY DAMAGE (Per accident)	\$
<input checked="" type="checkbox"/> HIRED AUTOS						
<input checked="" type="checkbox"/> NON-OWNED AUTOS						
	GARAGE LIABILITY					
	<input type="checkbox"/> ANY AUTO					
					AUTO ONLY - EA ACCIDENT	\$
					OTHER THAN AUTO ONLY: EA ACC	\$
					AGG	\$
A	EXCESS/UMBRELLA LIABILITY	UMS53723016	03/01/08	03/01/09	EACH OCCURRENCE	\$ 5,000,000
	<input checked="" type="checkbox"/> OCCUR <input type="checkbox"/> CLAIMS MADE				AGGREGATE	\$ 5,000,000
	<input type="checkbox"/> DEDUCTIBLE					\$
	<input checked="" type="checkbox"/> RETENTION \$ 10000					\$
A	WORKERS COMPENSATION AND EMPLOYERS' LIABILITY	WCS53723016	03/01/08	03/01/09	<input checked="" type="checkbox"/> WC STATUTORY LIMITS <input type="checkbox"/> OTHER	
	ANY PROPRIETOR/PARTNER/EXECUTIVE OFFICER/MEMBER EXCLUDED?				E.L. EACH ACCIDENT	\$ 500,000
	If yes, describe under SPECIAL PROVISIONS below				E.L. DISEASE - EA EMPLOYEE	\$ 500,000
					E.L. DISEASE - POLICY LIMIT	\$ 500,000
	OTHER					
A	Installation Fltr	FLTR53723016	03/01/08	03/01/09	2500 ded	50,000
B	Empl Practice Liab	03038054	01/18/08	01/18/09		3,000,000

DESCRIPTION OF OPERATIONS / LOCATIONS / VEHICLES / EXCLUSIONS ADDED BY ENDORSEMENT / SPECIAL PROVISIONS

Job: All Operations/ Officers are excluded from Workers' Compensation  
 Coverage Fax # 850-892-1318/ See notes for additional information

**CERTIFICATE HOLDER**

BRIGHTH

**CANCELLATION**

SHOULD ANY OF THE ABOVE DESCRIBED POLICIES BE CANCELLED BEFORE THE EXPIRATION DATE THEREOF, THE ISSUING INSURER WILL ENDEAVOR TO MAIL 30 DAYS WRITTEN NOTICE TO THE CERTIFICATE HOLDER NAMED TO THE LEFT, BUT FAILURE TO DO SO SHALL IMPOSE NO OBLIGATION OR LIABILITY OF ANY KIND UPON THE INSURER, ITS AGENTS OR REPRESENTATIVES.

AUTHORIZED REPRESENTATIVE

*Gregory W. Delmont*

Item # 3



# PEREGRINE

## COMMUNICATIONS

14818 W. Sixth Avenue Suite 16A  
Golden, CO 80401-5086

Phone: 303.278.9660

Fax: 303.278.9685

## QUOTATION



Date	Quote #
04/19/08	PCIQ2508

**Sold To:** City of Monroe, Georgia  
Brian Thompson

**Phone:** 770-266-5345  
**Fax:**

**Ship To:** City of Monroe, Georgia  
Brian Thompson

**Phone:** 770-266-5345  
**Fax:**

### NOTES:

1. Taxes are the sole responsibility of the purchaser
2. FREIGHT WILL BE PREPAID AND ADDED TO THE INVOICE.
3. Estimated lead time is 2-4 weeks ARO

Quote Valid For	Taxes	Terms	Acct. Mgr.	Ship Via
30 Days	Additional	Net 30	Marissa Post	BEST WAY

Ln #	Qty	Description	Unit Price	Ext. Price
1		<b>CATV UPGRADE FOR THE CITY OF MONROE, GA</b>		
2	200	UPGRADE DESIGN (PER MILE) WE WILL CHARGE FOR HTE ACTUAL CABLE-BEARING FOOTAGE, PER NODE.	\$225.00	\$45,000.00
3	0	ENGINEERING REVISIONS (PER HOUR)	\$60.00	\$0.00
4	0	DRAFTING REVISIONS (PER HOUR)	\$125.00	\$0.00

SubTotal	\$45,000.00
Sales Tax	\$0.00
Shipping	\$0.00
<b>Total</b>	<b>\$45,000.00</b>

**Account Manager:** Marissa Post

**Email:** marissa.post@perecom.com

**Please contact me if I can be of further assistance at 303.278.9660 Ext 232**

Peregrine Communications Inc.'s (PCI) Standard Terms and Conditions are the only terms and condition that apply to this quote unless other terms are expressly agreed to in writing by PCI. If you do not have a copy of the Standard Terms and Conditions please request a copy from a PCI representative. By accepting this quote, or issuing a purchase order for any goods or services, you agree to and accept PCI's Standard Terms and Conditions.



16 April 2008

**City of Monroe, Georgia**  
**Director of Electric and Telecommunications**  
**P.O. Box 1249**  
**Monroe, GA 30655**

**Re: Request for Proposal CATV Upgrade**

Mr. Thompson,

We thank you for the opportunity to be a participant in your bid process of the CATV Upgrade proposal for the City of Monroe. Our company, Sirah Contracting, Inc., is a telecommunications business. We are headquartered within the city limits of Monroe, GA.

Sirah Contracting, Inc. has been operating as a business for seven years. The staff brings a host of experience and expertise, with many of our project managers and supervisors having more than twenty years in the cable television business. Our company understands your proposal and can offer the City of Monroe a fair contract opportunity.

Our company has the staffing to facilitate all the needs of the proposal. Sirah Contracting, Inc. has maintained several large, ongoing contracts at once. Customer satisfaction is our priority. We have completed large projects for the major cable and telecommunications networks (to include AT&T, Time Warner, Comcast and Bright House) in several different states and within many municipalities. Our projects have consisted of Aerial, Underground, Splicing, Activation, Balance, Sweep, Upgrades, Headend, Fiber Optics, Customer Installations and Maintenance. We offer limited system down time in any work we perform.

Sirah Contracting, Inc. has established a solid reputation in all fields of CATV and telecommunications. Our customers use us time and again based on our ability to complete the job promptly and properly, with integrity and good judgment when problems arise.

The insurance levels Sirah Contracting, Inc. carries meets and exceeds the required limits in your proposal. All insurance is already in place.

Sirah Contracting, Inc. conducts background screening on all employees. Additionally, we have a contract with the diagnostic testing company Escreen, to perform urinalysis testing on personnel we send them for testing.

Safety is paramount to Sirah Contracting, Inc. All of our personnel possess a company safety manual and abide by it. A copy of that manual is being provided to you for your review.

I have additional information for the proposal, which is attached in the following pages. This information includes references and should give a clear picture of Sirah Contracting, Inc. and the ethical work we do. Also, a pricing breakdown bid for all items is being provided to assist you in making your final Contractor selection.

Should you require anything else, I can be reached at the listed office telephone number or my cell telephone number 770-715-1666.

Respectfully,

Steven A. Garcia  
President

Attachments

**155 Bankers BLVD. Bldg C-100, Monroe, GA 30655**  
**OFFICE 770.266.7072      FAX 770.267.4533**

16 March 2008

Sirah Contracting, Inc. has completed several projects in 2007. We have done projects from doing the initial permitting to installing the customer. Below is a list of some of the projects our team worked on in 2007.

**Time Warner Cable National Division.**

- 1) Richlands, Virginia. We upgraded 220 miles of plant which included 125 miles of total rebuild of the plant. There was about 100 miles of fiber installed on the project. We did all construction from the head end to sweeping the system. The person over the job for Time Warner was Danny Nelson. Phone 276 963 3782.
- 2) Keen Mountain, Virginia. Upgraded 60 miles of plant which included 20 miles of total rebuild of the plant. There was 30 miles of fiber installed on the system. Danny Nelson was also in charge of the project.
- 3) Cullman, Alabama. We upgraded about 650 miles of plant from January until the end of October. We also did all the new build and maintenance for the system in 2007. The person over the project was Vic Gates. Phone 941 928 0222.
- 4) We did various head end and tower projects. Some of the states we did the projects in 2007 were Georgia, Alabama, Mississippi, Colorado, Virginia, Idaho, Wyoming, Montana, California and Arizona. Vic Gates was over these projects also.
- 5) We did most of the new build and maintenance for the Time Warner systems in Dothan, Alabama and Fort Benning, Georgia. Wendall Jones was over this area. Phone 334 685 1929

\* We have been doing work for the National Division for 4+ years.

**Time Warner Cable Texas Division**

- 1) We did new build and maintenance for the Waco and Temple areas. Also we completed several fiber projects for the system. One of the projects was about 100 miles.

Dale Norrison is over the area for Time Warner. Phone 254 761 3810.

\* We have been doing work for the Texas Division for 2+ years.

### **Comcast Cable Eastern Division**

- 1) We had the contract to do the fiber diversity project. The project consisted of installing and splicing fiber in various locations throughout Virginia and Maryland. The coordinator for Comcast was Mark Heinbaugh. Phone 703 898 2308.

- We have been doing work for the Eastern Division for 2+ years

### **Brighthouse Networks Birmingham Division**

- 1) Elmore County Alabama. We did the new build and maintenance for the system. We also did any special projects that they had. The person over the projects was Mike Truelove. Phone 334 320 5847.
- 2) Eufaula, Alabama. We did the new build and maintenance for the system. We also did any special projects that they had. The person over the projects was Jeff Clark. Phone 334 619 1283.
- 3) Cantonment, Florida. We did the new build and maintenance for the system. We also did any special projects that they had. The person over the projects was Matt Renaldo. Phone 850 554 6675.

- We have been doing work for the Birmingham Division for 3 years.

### **COMPOSITE PRICING**

The Sirah Contracting, Inc. composite price per foot is based on the Request for Proposal (RFP). It includes the upgrade of all amplifiers, line extenders, forward / return alignment, sweep, troubleshooting, splicing, noise suppression and C/N testing.

The projected assumptions from the proposed design, indicates fifteen percent (15%) of the taps will be replaced and five percent (5%) of the hard-line splitters will be replaced. For anything additional and outside of these parameters, Sirah Contracting, Inc. has included a line item price list that can be used for the additional labor. This does not include the price for the design.

Sirah Contracting, Inc. works with the nationally know design firm, Peregrine Communications. We are offsetting the design cost in order to assist the City of Monroe in having a project as cost effective as possible. A copy of the design quote is included in this proposal.

**Composite Price Per Foot -----\$ 0.45**



Marcus,

We've taken a little closer look at Monroe, GA, run some design calculations, and here's a summary of what we've found. First of all, we used a set of design specs for an 870 MHz upgrade that we did for Comcast that used predominately SA equipment. That system was a good mix of urban and rural plant, so we assumed that it should be good to get some rough numbers for Monroe.

We designed two areas of Monroe, one in the middle of the urban area and the other out in the rural portion of the plant. The total plant was about 14 miles that we did calculations for, so the sample isn't too small and should result in a good projection for the whole plant. In general, the existing plant is designed with ~5.25 amplifiers per mile, with very adequate powering. We found that we only had to move one amplifier and add one amplifier in order to meet the 870 MHz specs in the whole 14 mile area. I would also expect some of the existing LEs to be changed to dual amplifiers, and some of the existing dual amps to be changed to triple amps, in order to reuse the existing amp locations. It may be necessary to add a new power supply in some areas where the powering is at maximum current, or the amps have low voltages. However, we didn't experience this in the areas that we designed.

Approximately 15% of the tap values had to be changed, and ~5% of the external splitter/coupler values. In order to keep several of the amplifiers in their existing locations, we had to add some distribution cable to backfeed. We added roughly 900' of new distribution, which is about 1% of the plant.

Typically in areas of the plant that do not meet the new 870 MHz specs, we would first attempt to reconfigure the existing equipment in their existing locations to make things work. For example, we might move taps to the other leg of a splitter/coupler, change tap values, put a line extender on the input side of a splitter/coupler rather than on one of the output sides, etc. If reconfiguring fails, we would then look at adding some distribution cable to backfeed, or even forward feed to make the existing taps work OK. Usually, we establish a limit for adding new cable based upon the cost of installation. That is, we might use 400' of new cable in one location as a limit, and a maximum of 3% of the existing plant in total for the upgrade. Thirdly, we would look at changing an existing amp to a new amplifier with more outputs, as I mentioned above. And lastly, we would move, or add new amplifiers if necessary.

I hope this helps in your analysis of the Monroe upgrade construction costs. Of course these numbers will change based upon the actual specs that are used for the upgrade. Please give me a call if you have any questions, or need more information. Thanks for working with us!

Steve

## Item Listing

March 31, 2007

Description	SIRAH
SPLICING - TRUNK & DISTRIBUTION - NEWBUILD	0.30
RETROFIT SPLICING	0.42
RETROFIT SPLICING - TAP PLATE CHANGE OUT	0.37
ACTIVATION (Forward)	0.06
ACTIVATION (Reverse)	0.06
PER PIECE PRICE FOR TRUNK AMP- TRUNK IN & OUT ONLY	118.50
PER PIECE PRICE FOR TRUNK AMP- TRUNK IN & OUT W/ ADD'L CABLES	180.00
LINE EXTENDER (PER PIECE)- FEEDER IN & OUT ONLY	75.00
LINE EXTENDER (PER PIECE)- MULTIPLE FEEDERS IN & OUT	80.00
RESPLICE TAPS	24.00
PLACE NODE BY REPLACING TRUNK AMP	225.00
INSTALL STRAIGHT SPLICE	18.00
INSTALL DC OR SPLITTER	28.00
STRAND ONLY	0.28
DELASH/RELASH	0.52
LASH COAX CABLE TO STRAND	0.42
ADDITIONAL CABLE	0.13
OVERLASH COAX CABLE TO STRAND	0.52
OVERLASH ADD'L CABLE	0.13
J-HOOKING OF EXISTING PLANT	0.05
RESAG EXISTING PLANT (PER SPAN)	28.00
WRECKOUT EXISTING PLANT	0.15
INSTALL DOWN GUY WITH GUY GUARD	8.00
INSTALL SCREW ANCHOR WITH GUY GUARD	18.00
INSTALL BUST ANCHOR WITH GUY GUARD	20.00
INSTALL ROCK ANCHOR WITH GUY GUARD	50.00
INSTALL GROUND ROD - VERTICAL NOT INCLUDED	22.00
INSTALL VGR	20.00
INSTALL BOND	6.00
INSTALL RISER	68.00
POLE XFER - STRAIGHT THROUGH	42.00
POLE TRANSFER - ANGLE GUY	45.00
POLE TRANSFER - DEAD END	45.00
POLE TRANSFER - DOUBLE DEAD END	50.00
POLE TRANSFER - 90 OR T-POLE	50.00
POLE TRANSFER - 4-WAY JUNCTION	70.00
POLE SETTING - UP TO 35 FT	250.00
TOP OUT POLE	20.00
BAND STEEL OR CONCRETE POLE	70.00
SET UP CHARGE	80.00
TREE TRIMMING	0.16
COMPOSITE UNDERGROUND - 24"	5.00
COMPOSITE UNDERGROUND - 36"	6.50
COMPOSITE UNDERGROUND - 48"	8.00
TRENCH ONLY - 24"	3.30
TRENCH ONLY - 36"	4.30
TRENCH ONLY - 48"	5.30
HAND TRENCHING - 24"	6.00
HAND TRENCHING - 36"	7.00
ROCK FOOTAGE	3.50
PLACE PVC IN TRENCH - UP TO 4"	0.45

## Item Listing

March 31, 2007

Description	SIRAH
PULL HARD LINE CABLE THRU CONDUIT	0.75
DIRECTIONAL BORE - 2"	10.00
DIRECTIONAL BORE - 3"	11.00
DIRECTIONAL BORE - 4"	12.00
MISSILE BORE - 2" OR 3"	7.00
MISSILE BORE - 4"	9.00
BACKHOE - 24"	23.00
ASPHALT REMOVAL AND RESTORATION	10.00
CONCRETE REMOVAL AND RESTORATION	12.00
REMOVE AND RESTORE SOD	0.75
RESTORATION	0.35
PLACE NODE PEDESTAL	150.00
REMOVE AND REPLACE TAP PEDESTAL	25.00
REMOVE AND REPLACE SPLITTER PEDESTAL	25.00
REMOVE AND REPLACE LE PEDESTAL	50.00
REMOVE AND REPLACE AMP PEDESTAL	75.00
POWER SUPPLY - AERIAL - NO PERMITTING	250.00
POWER SUPPLY - UG - NO PERMITTING	300.00
POWER SUPPLY - PERMITTING & INSPECTION	80.00
POWER SUPPLY W/ STANDBY - AERIAL-NO PERMITTING	300.00
POWER SUPPLY W/ STANDBY - UG -NO PERMITTING	375.00
WRECKOUT POWER SUPPLY	70.00
INSTALL LOCK BOX	45.00
LASH SINGLE FIBER TO STRAND	0.43
OVERLASH SINGLE FIBER TO STRAND	0.45
OVERLASH ADDITIONAL FIBER TO STRAND	0.15
FUSION SPLICING	35.00
INSTALL FIBER ENCLOSURE	100.00
PULL FIBER CABLE THRU CONDUIT	0.60
PULL ADD'L FIBER CABLE THRU CONDUIT	0.40
INSTALL SNOW SHOE - SEPARATE TRIP	25.00
FIBER NODE INSTALLATION	125.00
SUPERVISOR	50.00
FOREMAN	42.00
OPERATOR	39.00
LINEMAN	39.00
LABORER	20.00
GROUNDMAN	18.00
SPLICER	30.00
PICKUP TRUCK	20.00
BUCKET TRUCK	35.00
TRAILER	5.00
TRENCHER	22.00
BACKHOE	35.00
DROP BURY	55.00



## Utility Committee Meeting

### AGENDA

June 3, 2008

**Item:**

Discussion - Easement for GTC (GA Transmission)

**Department:**

Electric and Telecommunications

**Additional Information:**

**Financial Impact:**

**Budgeted Item:**

**Recommendation / Request:**

Viewing Attachments Requires Adobe Acrobat. [Click here](#) to download.

Attachments / click to download

 [Easement for GTC](#)



Georgia**Transmission**

**FED I.D. # 58 - 2231201**

2100 East Exchange Place, P.O. Box 2088, Tucker, Georgia 30085-2088

## **Request For Taxpayer Identification Number (TIN) In Connection With A Real Estate Transaction**

You are required by law to provide Georgia Transmission Corporation with your correct taxpayer identification number. If you do not provide your correct taxpayer identification number, you may be subject to civil or criminal penalties as imposed by law.

**Taxpayer Identification Number (TIN)** \_\_\_\_\_

**Name of Taxpayer** \_\_\_\_\_

**Address of Taxpayer** \_\_\_\_\_

Under penalties of perjury, I certify that the number shown on this statement is my taxpayer identification number. I also understand that this certification or information from this form will be furnished to the Internal Revenue Service as required by law.

Date: \_\_\_\_\_

\_\_\_\_\_  
Signature of Taxpayer

**Land Agent Requesting Information** \_\_\_\_\_

**Date of Acquisition:** \_\_\_\_\_

Total Proceeds from Acquisition: \$ \_\_\_\_\_

Seller's Gross Proceeds \$ \_\_\_\_\_

County \_\_\_\_\_

Land Lot/GMD \_\_\_\_\_

District \_\_\_\_\_

Project Name \_\_\_\_\_

Parcel Number \_\_\_\_\_

**Item # 4**

Georgia Transmission Corporation  
 2100 East Exchange Place  
 Tucker, GA 30084-5336  
 phone 770-270-7400  
 fax 770-270-7872

Date: 5-22-08

The City of Monroe

Dear Sirs:

Subject: East Walton - Jack's Creek 230 kV Transmission Line  
 Parcel Number: 22 and 42

Georgia Transmission Corporation (GTC) is presently acquiring easements in Walton County, Georgia, on which it will construct the subject project. Title records indicate that you own, or have an interest in, certain property on which GTC plans to construct a portion of this project.

A determination of the value of the easement has been made based on sales of comparable properties in the area. The determination places the value of the easement at \$6,500. If this offer and the enclosed Pole Line Easement are acceptable, please sign the Easement in the presence of a Witness and Notary Public and return it to my attention. Upon my receipt of the properly signed Easement, I will then issue you compensation, proportionate to your interest in the property.

Additionally, I have enclosed our information booklet *Private Property - Public Purpose*, which answers some frequently asked questions and outlines your rights and our responsibility to you as a landowner.

If you have any questions, please feel free to call me at 770-894-4598.

Sincerely,

Acknowledgement of Receipt of Letter:



 \_\_\_\_\_

Land Agent  
 Land Services Department

Date: \_\_\_\_\_

:hsb

Enclosures

Upon recording return to:

Chuck Scarborough  
Georgia Transmission Corporation  
P. O. Box 2088  
Tucker, Georgia 30085-2088

East Walton – Jack’s Creek 230 kV  
Transmission Line  
Parcel Number(s) 22 and 42

Attachment number 1  
Page 3 of 8

STATE OF \_\_\_\_\_

COUNTY OF \_\_\_\_\_

POLE LINE EASEMENT

FOR AND IN CONSIDERATION of the sum of Ten Dollars (\$10.00) and other good and valuable consideration, in hand paid by **GEORGIA TRANSMISSION CORPORATION** (An Electric Membership Corporation), a Georgia Corporation, and **WALTON ELECTRIC MEMBERSHIP CORPORATION**, a Georgia Corporation (hereinafter collectively called “Cooperative”), the receipt and sufficiency of which is hereby acknowledged, the undersigned, **THE CITY OF MONROE**, for its successors and assigns, do(es) hereby grant and convey to Cooperative, its successors and assigns, the right to from time-to-time construct, operate, maintain and renew overhead and underground electric transmission, distribution and communication lines with necessary or convenient structures, frames, poles, wires, manholes, anchors, guy wires, conduits, fixtures and appliances, protective wires and devices in connection therewith upon or under a strip of land more fully located and described below; together with all rights and privileges necessary or convenient for the full enjoyment or use of said strip for the purpose above described; with the right to permit the attachment of the wires and appliances of any other company or person, to said structures, frames and poles together with the right at all times to enter upon said premises for the purpose of inspecting said lines, making repairs, renewals, alterations and extensions thereon, thereto or therefrom; together with the right to cut away and keep clear of said lines all trees and other obstructions that may now or hereafter in any way interfere or be likely to interfere with the proper operation of said lines. Cooperative shall have the right to remove and dispose of danger trees on lands adjacent thereto, which now or may hereafter injure or endanger any of the works on said strip provided that on future cutting of such danger trees Cooperative shall pay to the undersigned, or to the undersigned’s(s’) successors or assigns, the fair market value of the merchantable timber so cut, timber so cut to become the property of Cooperative. However, it is agreed that part of the within named consideration is full payment for all timber cut or to be cut in the initial clearing and construction of said lines; timber so cut to become the property of Cooperative.

The undersigned do(es) not convey any land, but merely grants the rights, privileges and easements to go in, upon, along and across that strip of land owned by the undersigned.

Said strip is that portion of undersigned’s(s’) property located in Land Lot(s) 8 and 107, 3<sup>rd</sup> District of Walton County, Georgia, which is illustrated on the attached plat of survey entitled “East Walton – Jack’s Creek 230 kV Transmission Line/Parcel No. 22 - Easement Area Plat”, dated June 8, 2007, and on the attached plat of survey entitled “East Walton – Jack’s Creek 230 kV Transmission Line/Parcel No. 42 - Easement Area Plat” dated June 8, 2007, which was prepared by Albert M. Wynn, Jr., Georgia Registered Land Surveyor No. 2178. As verified by said plat, the total amount of land embraced by this easement shall be 1.426 acre(s).

Cooperative shall not be liable for or bound by any statement, agreement or understanding not herein expressed.

The undersigned warrant(s) its title to and ownership of the tract or parcel hereby affected, with the understanding that Cooperative is relying on said warranty in obtaining this easement.

TO HAVE AND TO HOLD forever, unto Cooperative, its successors and assigns, the rights, powers, and interests herein granted, which shall be a covenant running with the title to the lands above described.

IN WITNESS WHEREOF, the said undersigned has(have) hereunto set its hand(s) and seal(s),  
this \_\_\_\_\_ day of \_\_\_\_\_, 2008.

Attachment number 1  
Page 4 of 8

Signed, sealed, and delivered  
in the presence of:

THE CITY OF MONROE

\_\_\_\_\_  
WITNESS

BY: \_\_\_\_\_  
TITLE: \_\_\_\_\_

\_\_\_\_\_  
NOTARY PUBLIC

ATTEST: \_\_\_\_\_  
TITLE: \_\_\_\_\_

(NOTARY SEAL)

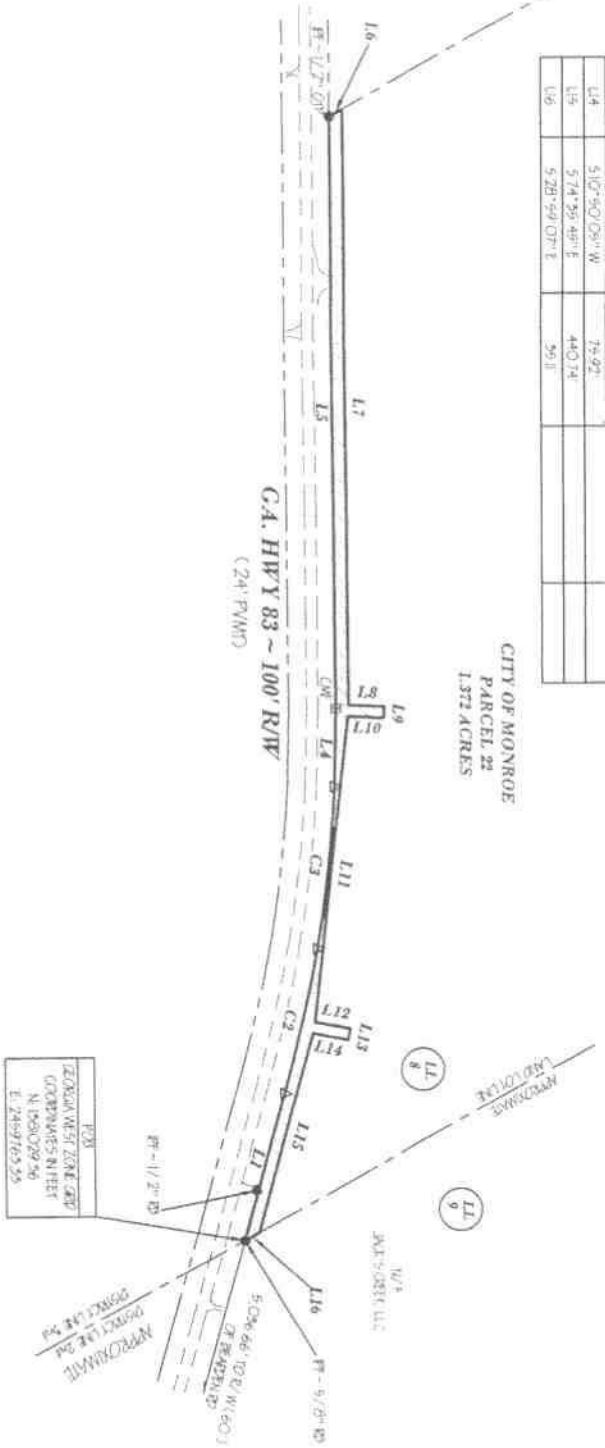
(CORPORATE SEAL)



LINE	BEARING	LENGTH	ACREAGE
L1	N 74° 29' 46" W	524.03	
L2	N 77° 11' 59" W	53.79	54.09 AC
L3	N 85° 49' 05" W	562.10	562.35
L4	N 80° 49' 59" W	467.91	206.61 AC
L5	S 89° 35' 59" W	1274.26	
L6	N 29° 22' 10" W	51.55	
L7	N 69° 25' 38" E	1202.89	
L8	N 02° 38' 16" E	75.10	
L9	S 07° 04' 44" E	29.00	
L10	S 07° 58' 46" W	79.68	
L11	S 05° 44' 05" E	663.34	
L12	N 03° 50' 05" E	75.92	
L13	S 19° 09' 59" E	29.00	
L14	S 10° 50' 05" W	75.92	
L15	S 74° 29' 46" E	440.14	
L16	S 28° 59' 07" E	59.11	

CITY OF MONROE  
PARCEL 22  
1.371 ACRES

GA. HWY 83 ~ 100' R/W  
(24' P/W)



POINT  
GEORGIA WEST ZONE AND  
COORDINATES IN FEET  
N 158029.56  
E 7469765.25

THE FIELD DATA UPON WHICH THIS PLAN  
IS BASED WAS A QUALITY FREQUENCY OF  
ONE FOOT IN 10,000 ± FEET AND AN  
ANGLE MEASUREMENT OF 102 SECONDS  
PER ANGLE POINT AND WAS ADJUSTED  
USING \_\_\_\_\_  
RLE



ALBERT M. WYNN, JR.  
GA. REG. LAND SURVEYOR NO. 2178  
ELECTRONIC TOTAL STATION USED

- LEGEND
- ☒ C&P - CONCRETE MONUMENT/POUND
  - RP - RECON/POUND
  - RP - RECON/POUND
  - - EASEMENT AREA
  - △ - ANGLE POINT

FIELD DATE 11/08/2007  
PLAT DATE 11/11/2007

EAST WALTON ~ JACK'S CREEK  
220' W TRANSMISSION LINE



5	2	Parcel 22	Scale 1" = 500'
1	2	Parcel 22	Scale 1" = 500'
1	2	Parcel 22	Scale 1" = 500'
1	2	Parcel 22	Scale 1" = 500'
1	2	Parcel 22	Scale 1" = 500'
1	2	Parcel 22	Scale 1" = 500'
1	2	Parcel 22	Scale 1" = 500'
1	2	Parcel 22	Scale 1" = 500'
1	2	Parcel 22	Scale 1" = 500'
1	2	Parcel 22	Scale 1" = 500'

REFERENCES

TITLE WORK PROVIDED BY FREEDOM TITLE  
& ABSTRACT CO., INC.

THE CITY OF MONROE A  
POLITICAL SUBDIVISION OF THE STATE OF GEORGIA  
CONDENMATION CASE NO. 87-047, FILED 02/02/87  
TAX PARCEL: C180003000

JACK'S CREEK, LLC  
DB 1464, PG 577  
DB 2175, PG 65  
PB 89, PG 50

EREL J. ARNOLD &  
WRT F. ARNOLD  
DB 511, PG 519  
DB 1706, PG 207  
PG 76, PG 86

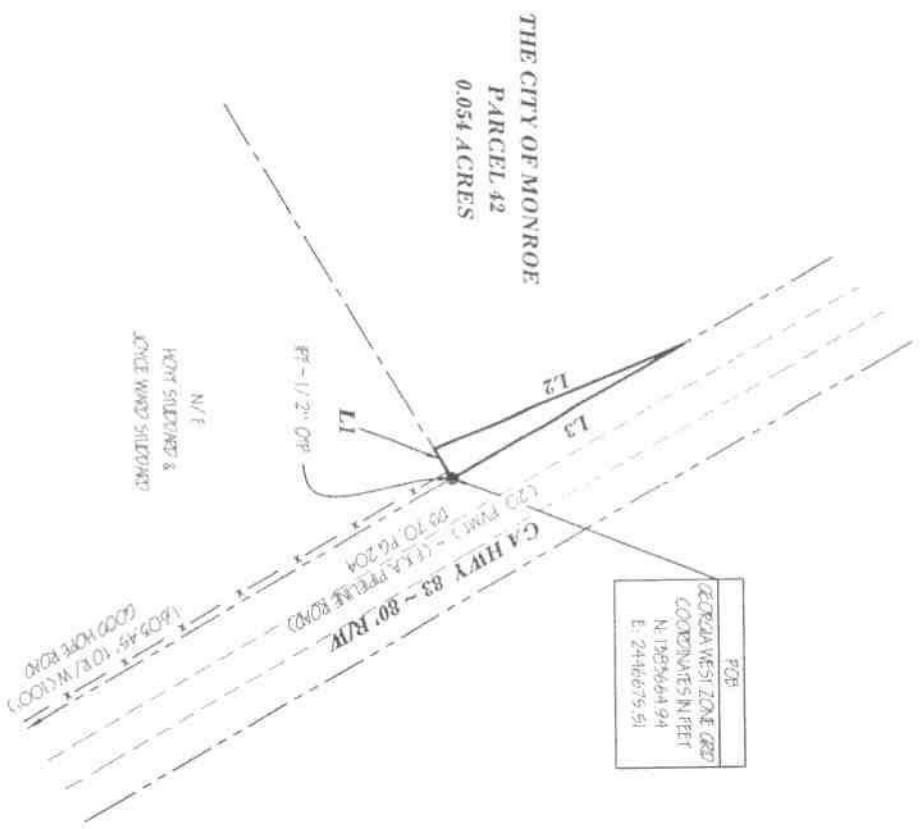


LAND LOT 8, 3rd DISTRICT, WALTON COUNTY, GEORGIA

REFERENCES

CITY OF MONROE  
NO DEED PROVIDED  
TAX PARCEL: C1650080000

MON SILENTW 8  
JOICE WIND SILENTW  
DB 2708, PG 328  
PB 101, PG 171



FOR  
GEORGIA WEST ZONE GRS  
COORDINATES IN FEET  
N: 1285664.94  
E: 2446675.51



LINE	BEARING	DISTANCE
L1	S 55° 45' 42" W	24.92'
L2	N 22° 44' 55" W	190.94'
L3	S 80° 14' 50" E	189.50'

LAND LOT 107, 3rd DISTRICT, WALTON COUNTY, GEORGIA

THE FIELD DATA ON WHICH THIS PLAN IS BASED HAS A CLOSEST PROBABLE ONE FOOT IN 10,000+ FEET AND AN AVERAGE ERROR OF 0.2 FEET PER ANGLE POINT AND WAS ADJUSTED USING THE FOLLOWING:



ALBERT M. WINN, JR.  
GA. REG. LAND SURVEYOR NO. 2178  
ELECTRONIC TOTAL STATION USED

- LEGEND
- ☒ CWF - CONCRETE MONUMENT FOUND
  - ☒ PF - IRON PIN FOUND
  - ☐ PS - IRON PIN SET
  - ☐ - EXISTENT AREA
  - WIRE FENCE

FIELD DATE: 6/18/2007  
PLAT DATE: 6/18/2007

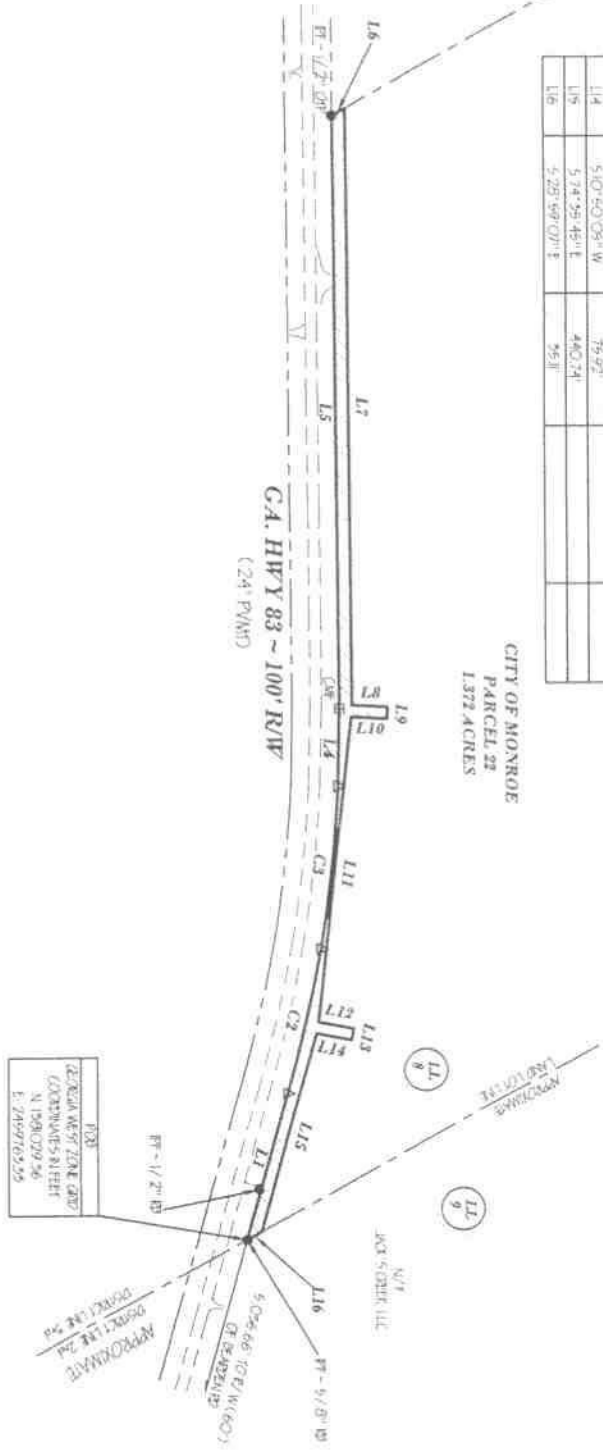
EAST WALTON ~ JACK'S CREEK 250' W TRANSMISSION LINE	
<b>Georgia Transmission</b> Owned By Georgia Electric Cooperative	
PARCEL 42 EASEMENT AREA PLAN	
Drawn: TAD	Revised: ENW
Checked: BTF	Revised:
Field: PROCD	Date: 6/18/2007
Scale: 1" = 100'	
9592-EP	
Sheet 1 of 1	



LINE	BEARING	DISTANCE	MEASURE	REMARKS
L1	N 74° 29' 16" W	574.89'		
L2	N 77° 11' 59" W	528.75'		
L3	N 05° 49' 09" W	552.10'	528.89'	3468.40'
L4	N 03° 42' 52" W	167.81'	547.55'	2065.14'
L5	S 09° 45' 59" W	1274.66'		
L6	N 29° 25' 10" W	91.55'		
L7	N 09° 35' 30" E	1282.80'		
L8	N 02° 58' 16" E	79.70'		
L9	S 87° 03' 44" E	75.00'		
L10	S 02° 58' 16" W	75.68'		
L11	S 89° 44' 05" E	665.94'		
L12	N 10° 50' 09" E	75.92'		
L13	S 19° 09' 55" E	26.00'		
L14	S 10° 40' 08" W	75.92'		
L15	S 74° 29' 16" E	440.24'		
L16	S 25° 59' 01" E	55.81'		

CITY OF MONROE  
PARCEL 22  
1.372 ACRES

CA. HWY 83 ~ 100' R/W  
(24' P/W)



TOB  
GEORGIA WEST ZONE (2011)  
COORDINATES 811111  
N 1596029.56  
E 7499765.25

THE FIELD DATA UPON WHICH THIS PLAN IS BASED WAS A CLOSE RESECTION OF ONE FOOT IN 10,000+ FEET AND AN ANALYTICAL ERROR OF .02 SECONDS PER HORIZONAL AND VERTICAL DISTANCE. UNLESS OTHERWISE NOTED, ALL DISTANCES ARE IN FEET.



ALBERT M. WILMAN, JR.  
A REGISTERED SURVEYOR NO. 2378  
ELECTRONIC TOTAL STATION USED

- LEGEND
- CONCRETE MONUMENT/FLAG
  - IRON PIVOT/FLAG
  - IRON PIVOT/SET
  - EXISTING AREA
  - WATER POINT

REFERENCES  
TITLE WORK PROVIDED BY FREEDOM TITLE  
S. ANDERSON CO., INC.  
THE CITY OF MONROE A  
POLITICAL SUBDIVISION OF THE STATE OF GEORGIA  
CONDEMNATION CASE NO. 87-047, FILED 02/02/87  
TAX PARCEL: C180003000

JACK'S CREEK, LLC  
291464, PG 577  
291475, PG 615  
291492, PG 50

EPREL, J. ANDALD &  
MARY P. ANDALD  
291464, PG 577  
291475, PG 615  
291492, PG 50



LAND LOT 8, 3rd DISTRICT, WALTON COUNTY, GEORGIA

**PHOTO SCIENCE**  
Geospatial Solutions  
PHOTO SCIENCE, INC.  
1410 INDIAN TRAIL ROAD  
NORCROSS, GEORGIA 30093  
(770) 564-9843

EAST WALTON ~ JACK'S CREEK 250' W TRANSMISSION LINE	
Parcel 22	
Owner	Transmission
Created	DATE
Revised	DATE
Drawn	DATE
Checked	DATE
Approved	DATE
Project	Project
Scale	1" = 500'
Sheet	1 of 1

**Georgia Transmission**  
Owned By Georgia Electric Cooperative

LINE	BEARING	DISTANCE
L1	S 59° 45' 42" W	24.92'
L2	N 22° 44' 59" W	160.94'
L3	S 30° 14' 50" E	129.50'

**REFERENCES**  
**CITY OF MONROE**  
**NO DEED PROVIDED**  
**TAX PARCEL: C16500800000**  
 MONT SUTHERLAND  
 JONCE WARD SUTHERLAND  
 DB 2705, PG 229  
 PG 10, PG 171

100 0 100 200

GRAPHIC SCALE - FEET

LAND LOT 107, 3rd DISTRICT, WALTON COUNTY, GEORGIA

**PHOTO SCIENCE**  
*Geospatial Solutions*  
PHOTO SCIENCE, INC.  
1410 INDIAN TRAIL ROAD  
NORCROSS, GEORGIA 30093  
(770) 564-9843

THE PLAT HAS BEEN CALCULATED FOR  
CLOSURE AND IS FOUND TO BE ACCURATE  
WITHIN ONE FOOT IN \_\_\_\_\_ FEET  
PER ANGLE POINT AND TWO FEET  
PER A LINE.

ALBERT M. WILAN, JR.  
GAREG LANE, SUITE 100, 2170  
ELECTRONIC TOW, STATION USED

LEAD

☒ CMF - CONCRETE MOUNT FOLD

☒ PF - P23 PN FOLD


☐ PS - P23 PN SET

☐ - ELEMENT AREA

FIELD DATE: 4/25/2007  
PLANT DATE: 4/24/2007

EAST WALTON - JACK'S CREEK  
230 KV TRANSMISSION LINE

 **Georgia Transmission**  
Owned By Georgia Electric Cooperatives

EA		
2		
<p>EAST WATSON - JACK'S CREEK 2500 KV TRANSMISSION LINE</p>		
<p><b>Georgia Transmission</b></p> <p>Owned By Georgia Electric Cooperatives</p>		
<p></p>		
<p>PAGE 42</p>		
Station	TA13	Interval
Ground	B+5	Interval
Ground		Interval
Notes	P19060	Notes
		Scale 1" = 100'
SHEET 1 OF 1		9392-EP



## Utility Committee Meeting

### AGENDA

June 3, 2008

**Item:**

Approval - Plant Vogtle Contract

**Department:**

Electric and Telecommunications

**Additional Information:**

I have the contracts in the office. If anyone wants to go over them please call.

**Financial Impact:****Budgeted Item:****Recommendation / Request:**

Viewing Attachments Requires Adobe Acrobat. [Click here](#) to download.

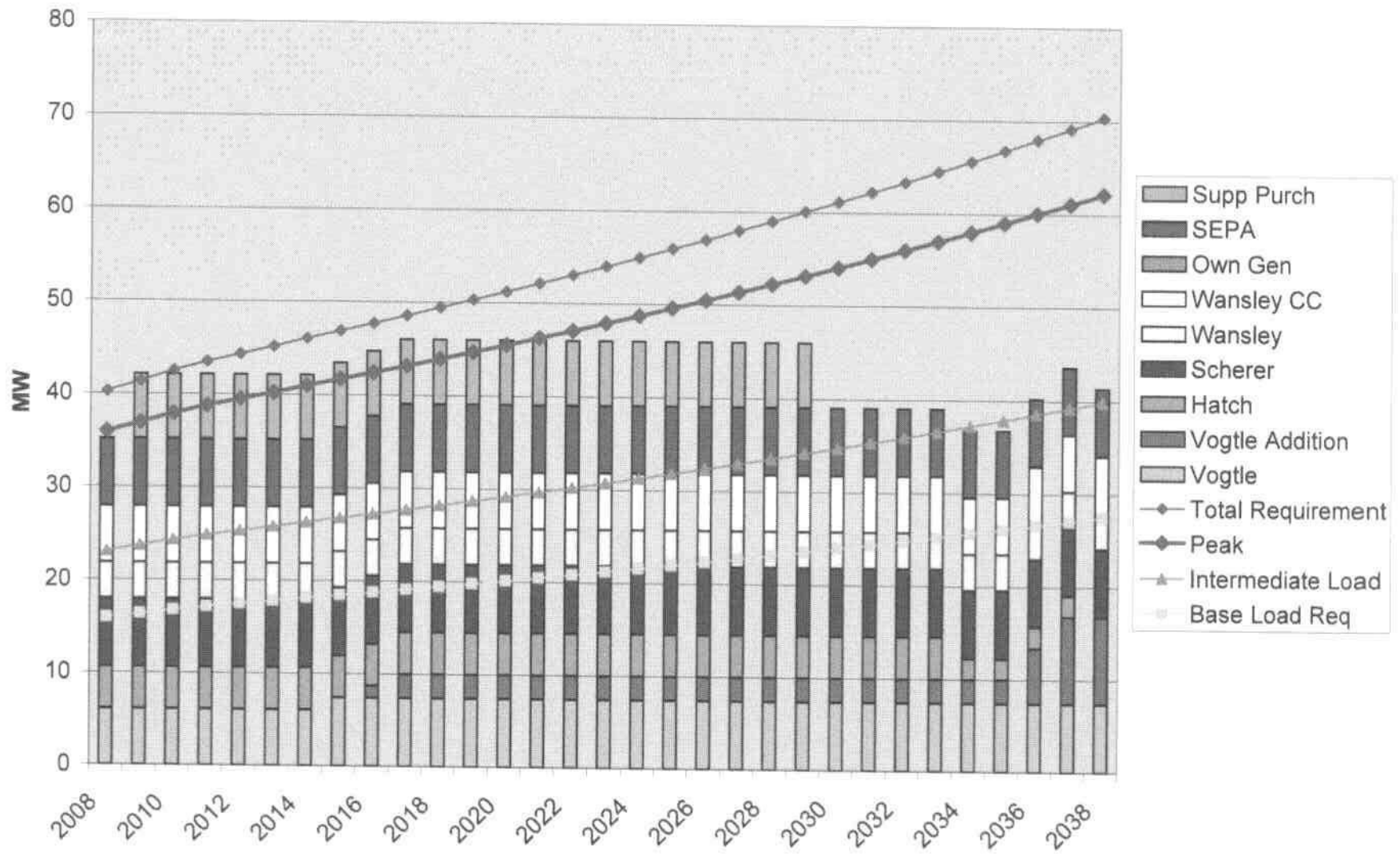
Attachments / click to download

 [Plant Vogtle Update](#)

# City of Monroe Summary

- MEAG Total Installed Costs - \$3.1362 (Billion)
- Unit Cost - \$6,269.00 / KW
- Recommendation for Monroe
  - 9.2 MWs total - 2.4 MWs in 2016
  - 6.8 MWs in 2038
- Place 6.8 MWs in the PPA

# **City of Monroe Capacity Requirements** **3 MW Vogtle Addition in 2016    9 MW Vogtle Total in 2038**





## Utility Committee Meeting

### AGENDA

June 3, 2008

---

**Item:**

Approval - Underground Primary Purchase

**Department:**

Electric and Telecommunications

**Additional Information:**

6 (2500 ft) reels of underground wire @ 2.35 per foot total cost (15,000 x 2.35) \$35,250.

**Financial Impact:****Budgeted Item:****Recommendation / Request:**

Viewing Attachments Requires Adobe Acrobat. [Click here](#) to download.

Attachments / click to download

---





## Utility Committee Meeting

### AGENDA

June 3, 2008

---

**Item:**

Approval - Utility Building Projects

**Department:**

Electric and Telecommunications

**Additional Information:**

I will bring bids to Meeting on Monday June-2

**Financial Impact:****Budgeted Item:****Recommendation / Request:**

Viewing Attachments Requires Adobe Acrobat. [Click here](#) to download.

Attachments / click to download

---